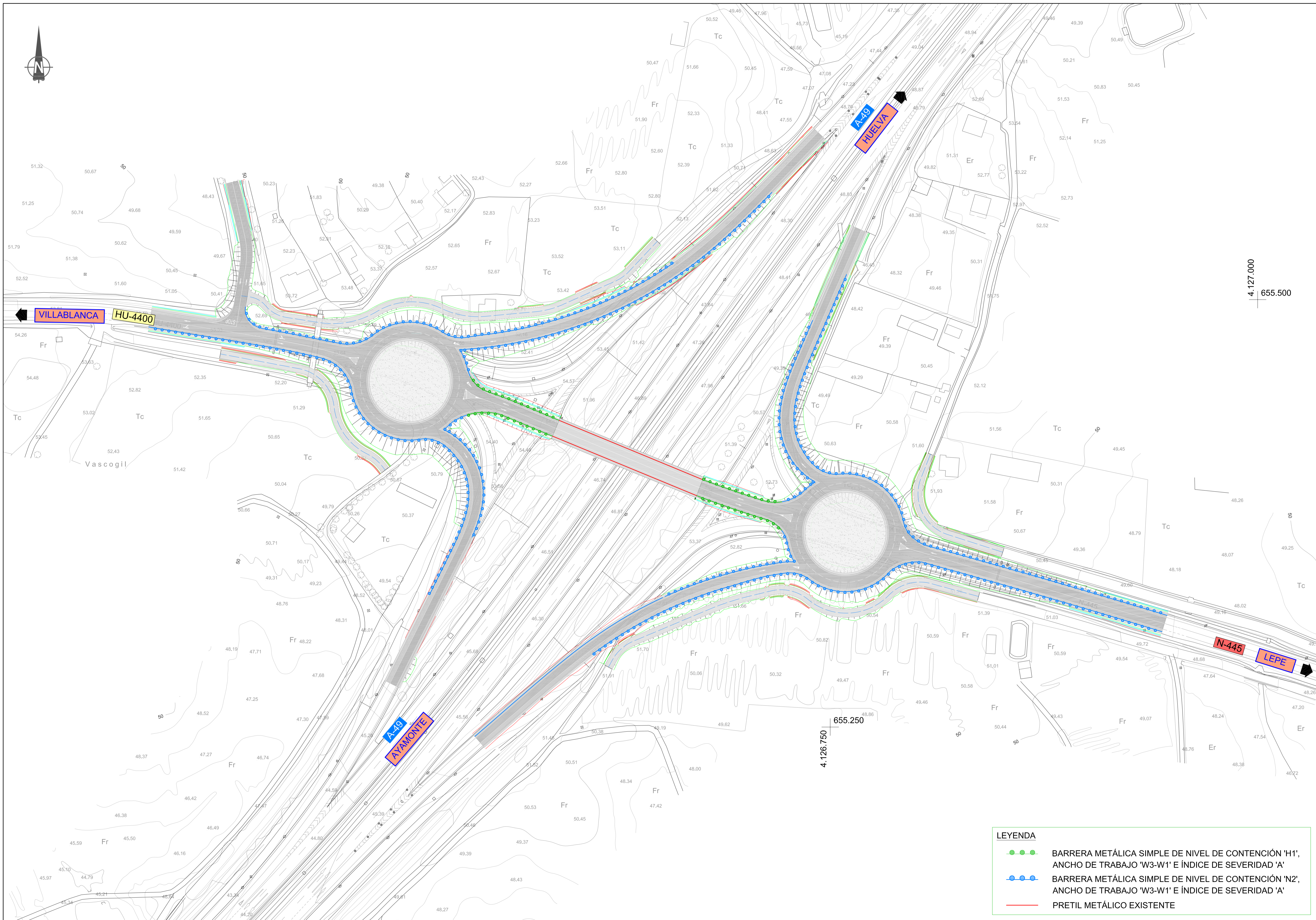


4.127.000  
655.500

655.250  
4.126.750



4.127.000  
655.500

4.126.750  
655.250

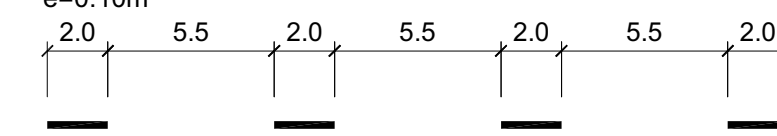
LEYENDA	
	BARRERA METÁLICA SIMPLE DE NIVEL DE CONTENCIÓN 'H1', ANCHO DE TRABAJO 'W3-W1' E ÍNDICE DE SEVERIDAD 'A'
	BARRERA METÁLICA SIMPLE DE NIVEL DE CONTENCIÓN 'N2', ANCHO DE TRABAJO 'W3-W1' E ÍNDICE DE SEVERIDAD 'A'
	PRETIL METÁLICO EXISTENTE

# SEÑALIZACIÓN HORIZONTAL. MARCAS VIALES

## 1.-MARCAS LONGITUDINALES DISCONTINUAS

PARA SEPARACION DE CARRILES

M-1.3  
VIAS CON VM < 60km/h  
e=0.10m



## 2.-MARCAS LONGITUDINALES CONTINUAS

PARA SEPARACION DE CARRILES

M-2.2  
PARA ORDENACION DEL ADELANTAMIENTO EN CALZADAS DE DOS CARRILES Y DOBLE SENTIDO DE CIRCULACION  
e=0.10m

PARA BORDE DE CALZADA

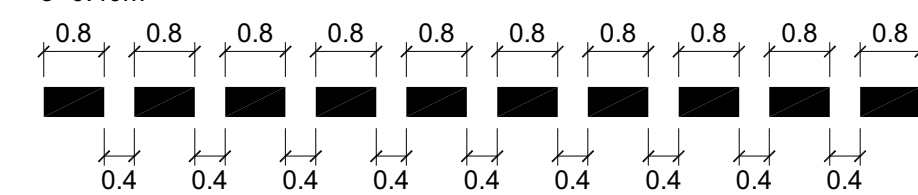
M-2.6  
VIAS CON VM < 100km/h  
e=0.15m SI ARCEN > 1.5m  
e=0.10m SI ARCEN < 1.5m

## 4.-MARCAS TRANSVERSALES

M-4.1  
MARCAS TRANSVERSALES CONTINUAS  
LINEA DE DETENCION  
e=0.40m

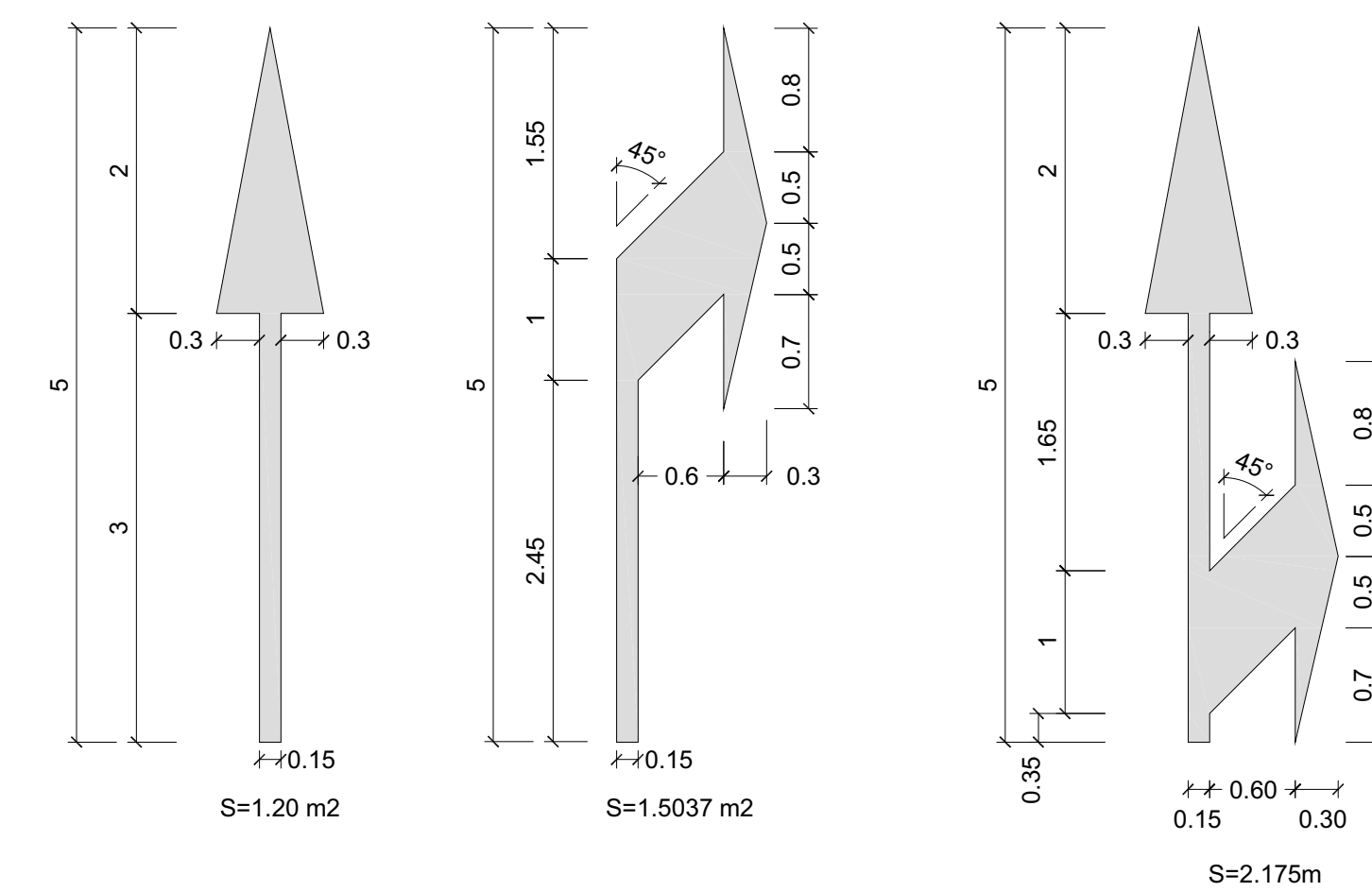


M-4.2  
MARCAS TRANSVERSALES DISCONTINUAS  
LINEA DE CEDA EL PASO  
e=0.40m



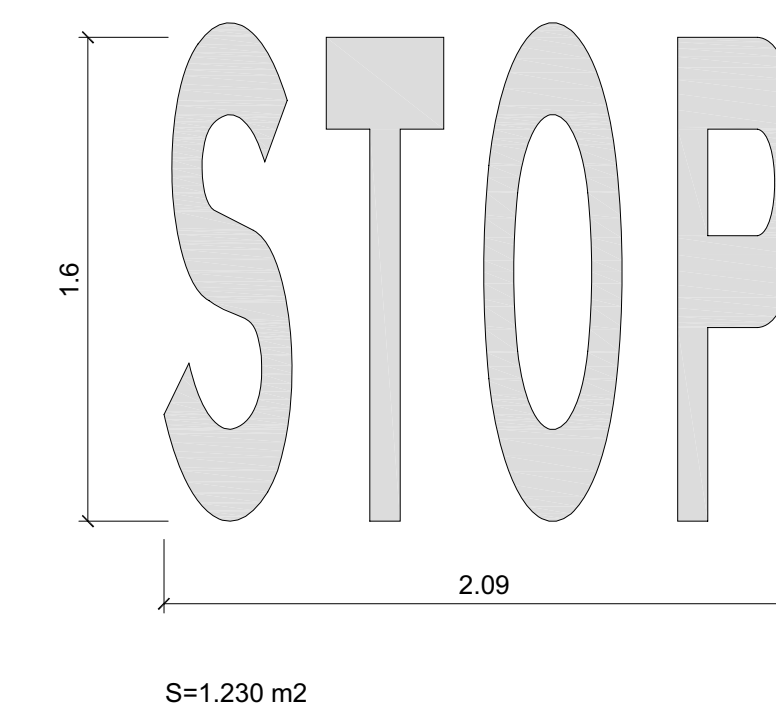
## 5.- FLECHAS

M-5.2 VIA CON VM < 60 Km/h

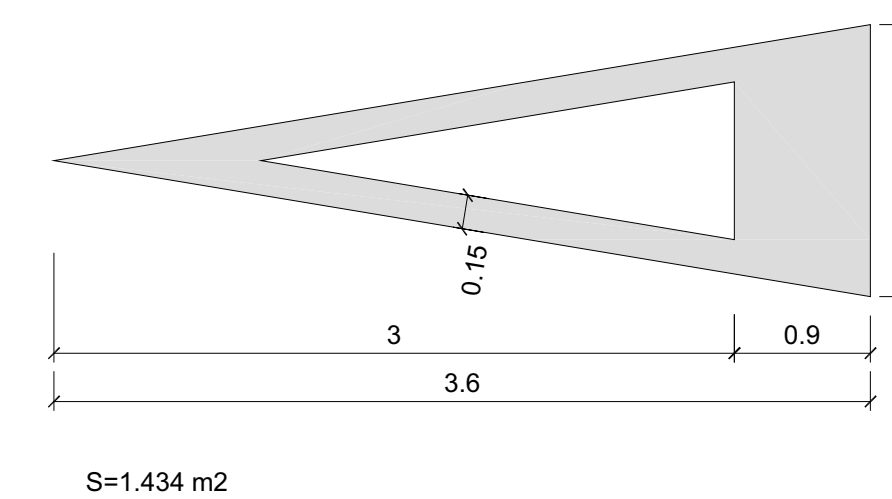


## 6.- INSCRIPCIONES

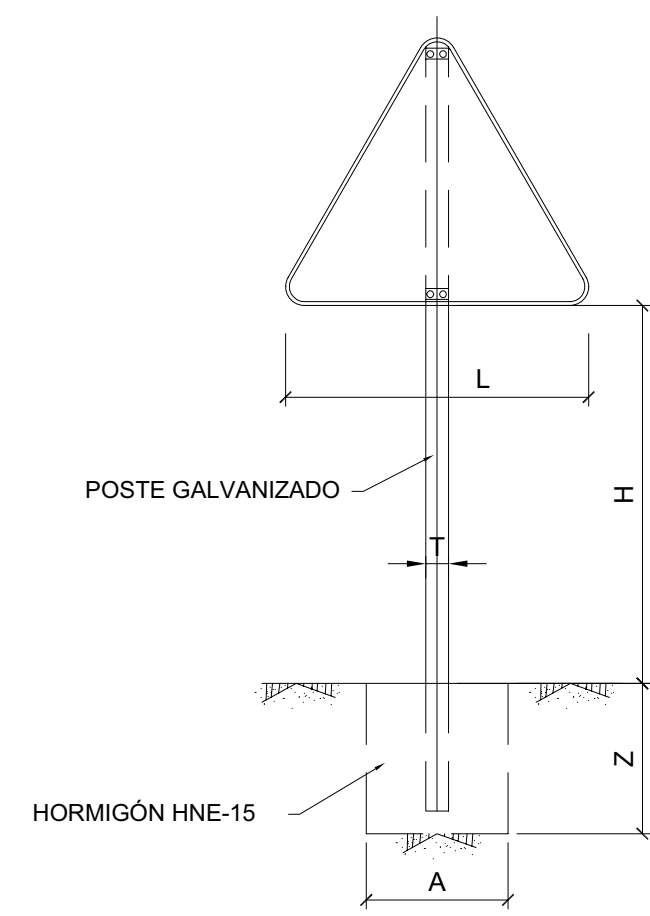
M-6.4 VIA CON VM < 60 Km/h



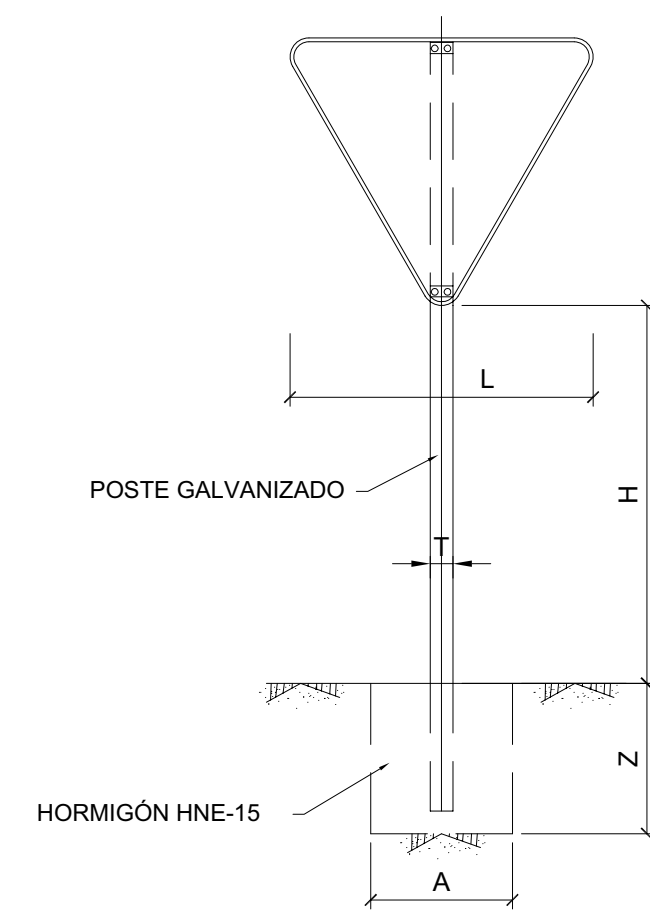
M-6.5 CEDA EL PASO



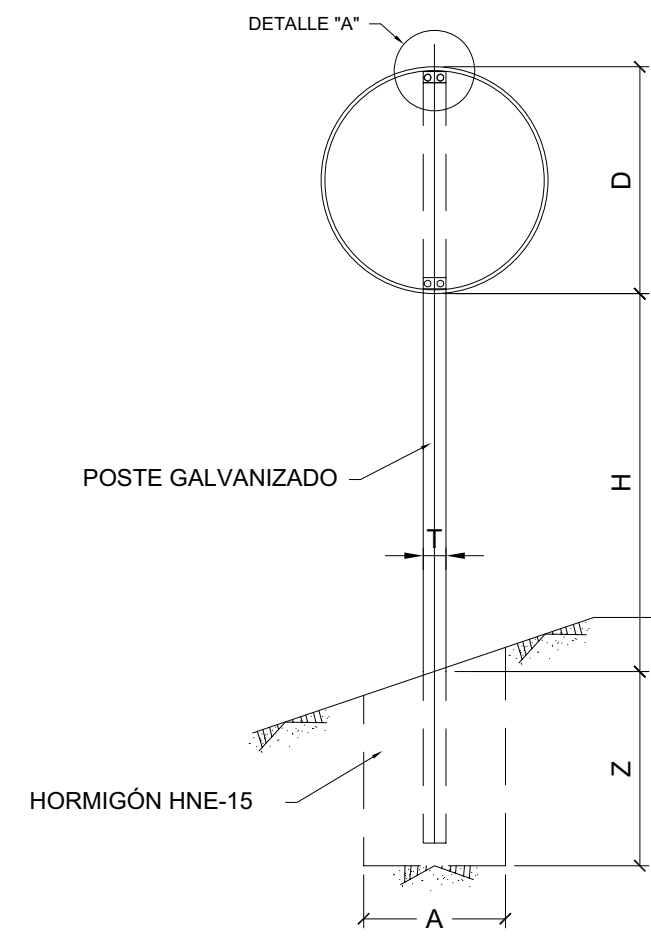
# SEÑALIZACIÓN VERTICAL. TIPOS DE SEÑALES



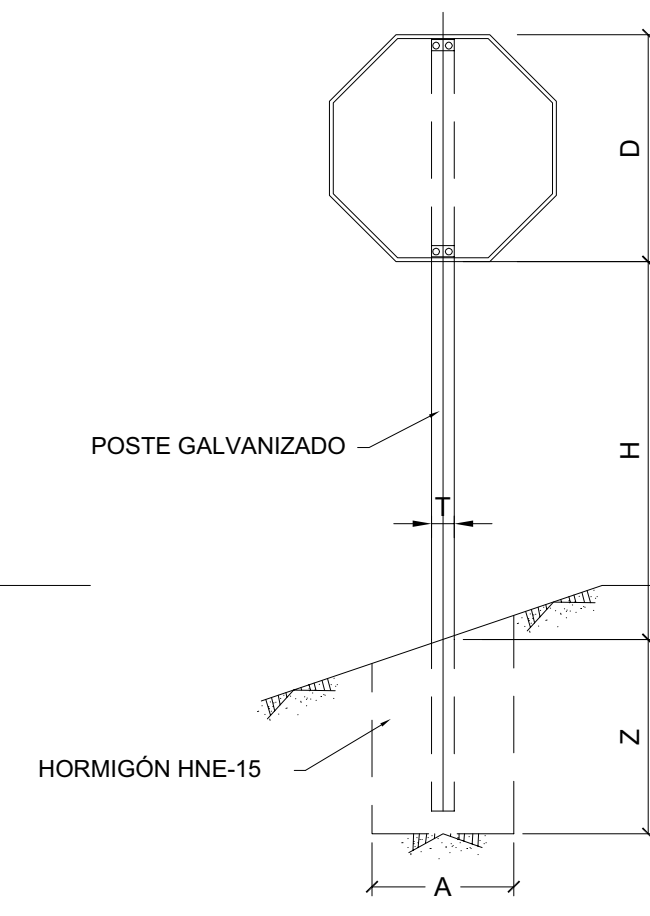
TIPO 1



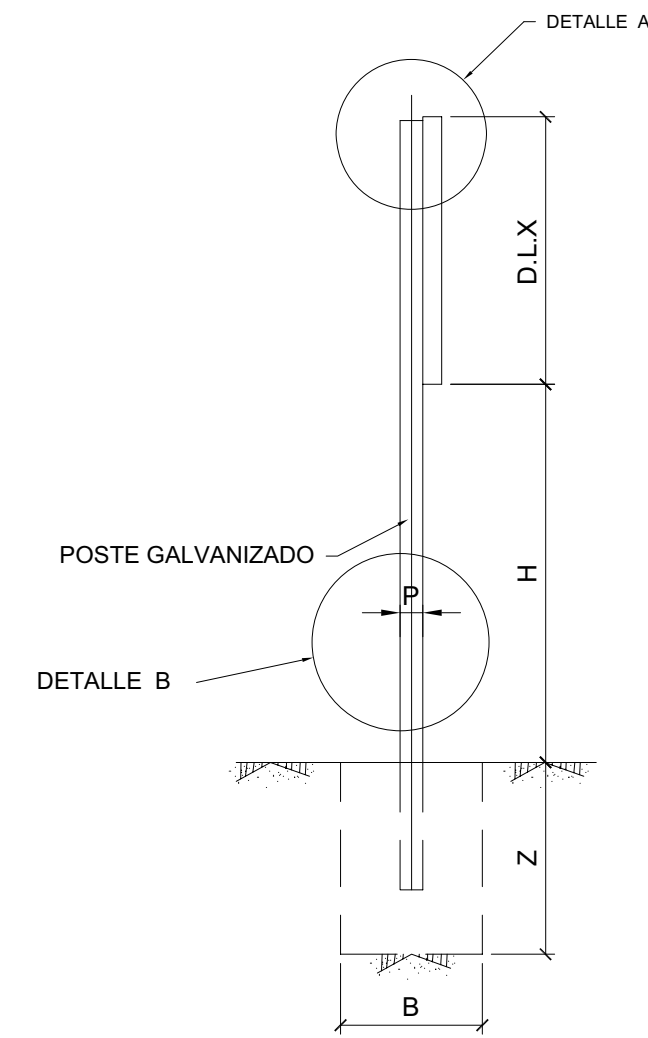
TIPO 2



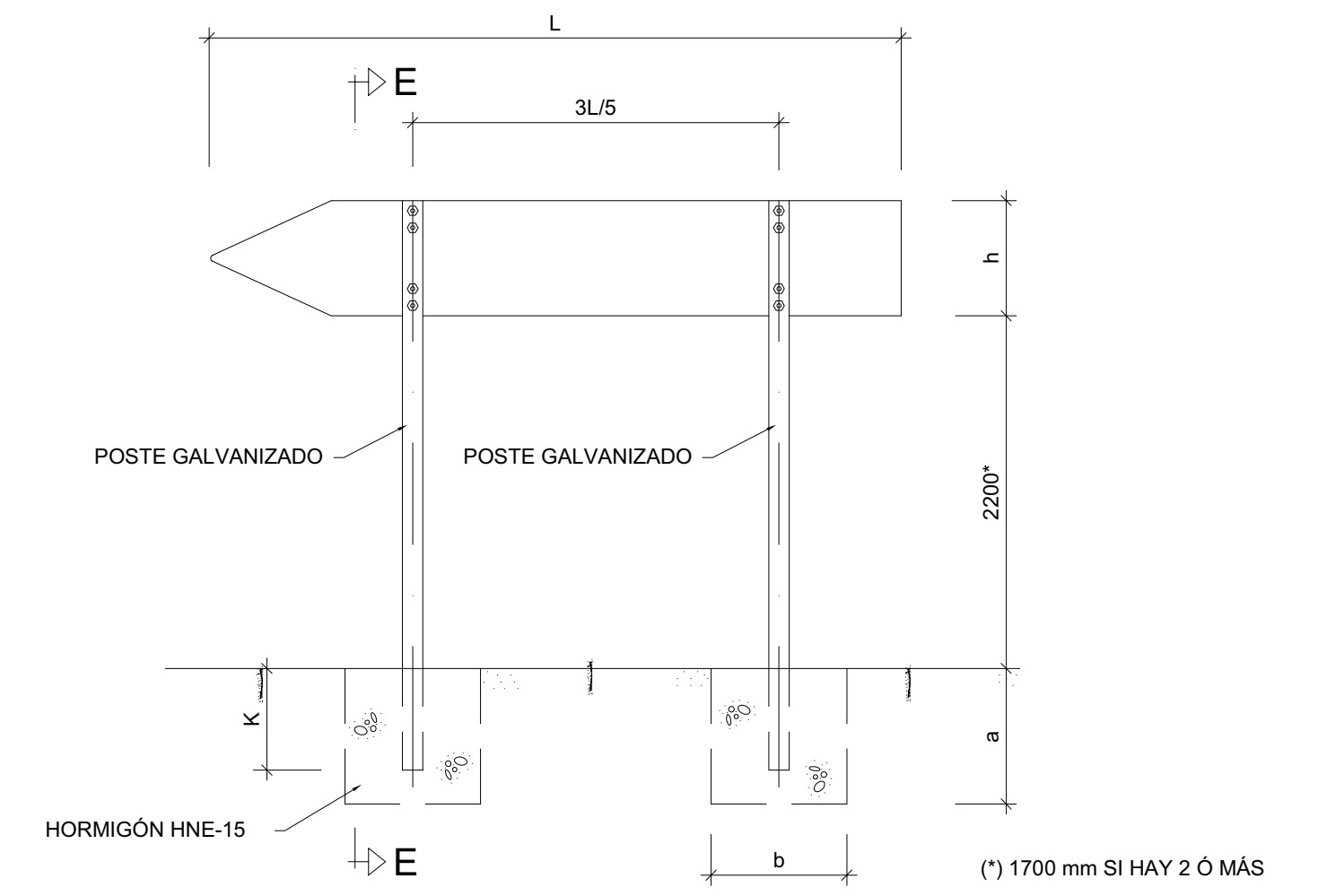
TIPO 3



TIPO 4  
SEÑAL DE STOP



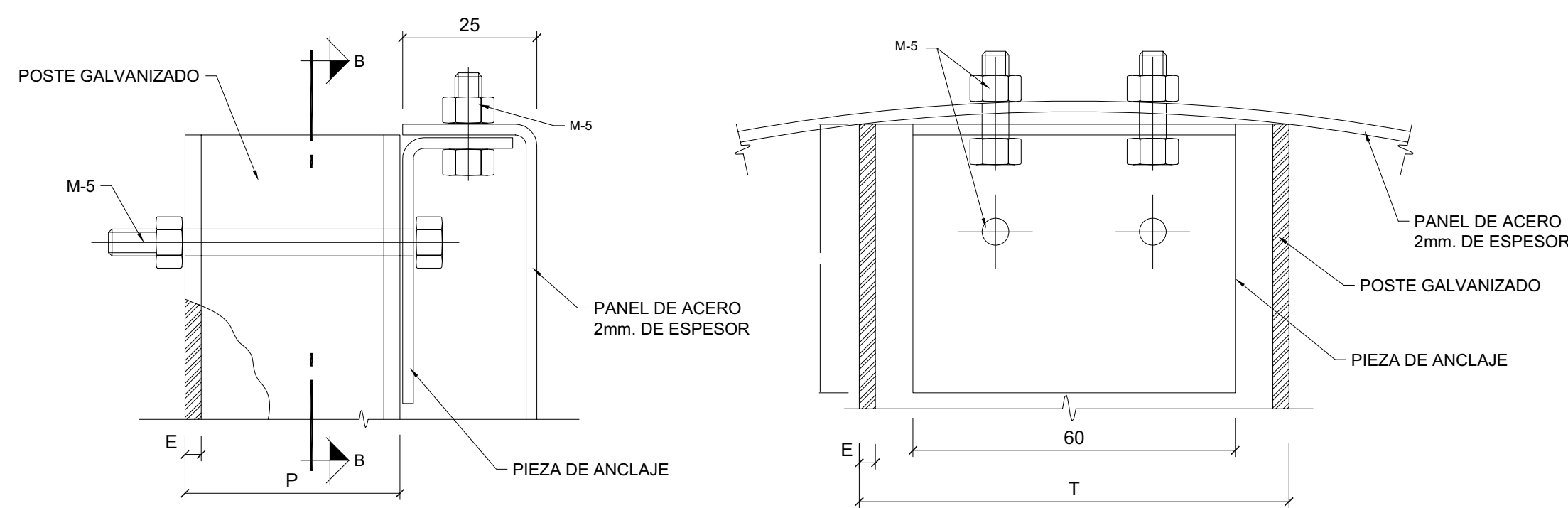
ALZADO LATERAL



SEÑAL DE DIRECCIÓN

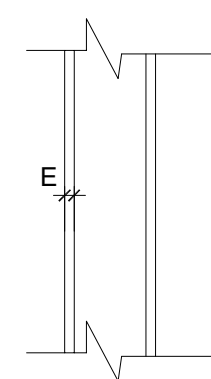
(\* 1700 mm SI HAY 2 Ó MÁS)

DETALLE "A"



SECCION B-B

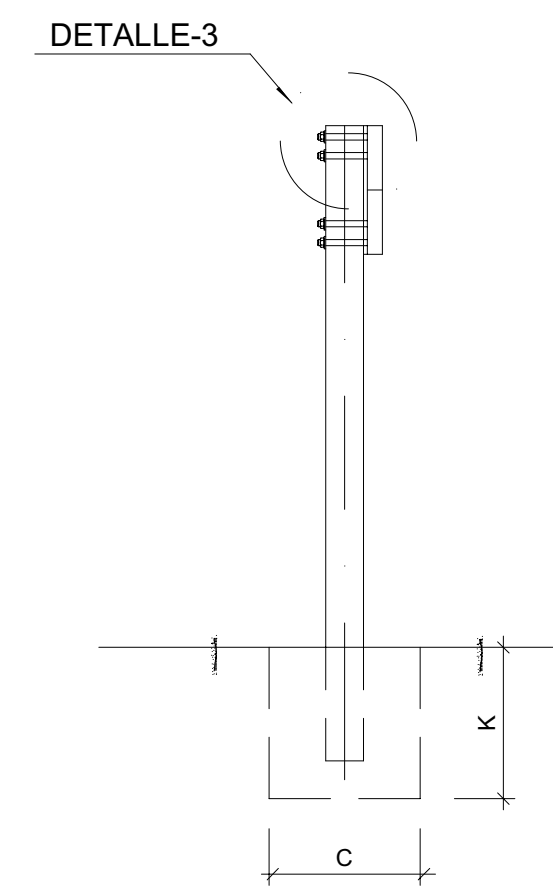
DETALLE B



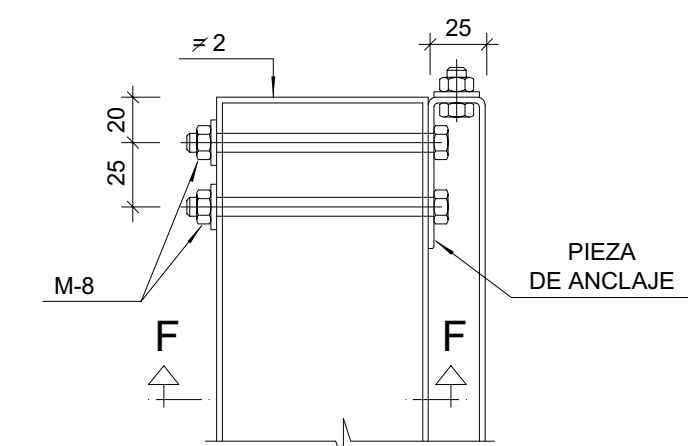
- NOTAS:
- 1.- LAS CARACTERÍSTICAS DE LAS SEÑALES (COLOR, DIMENSIONES, ABECEDARIO, ETC...) SEGÚN LAS NORMAS 8.1-1.C. DEL MOPU
  - 2.- LAS SEÑALES INFORMATIVAS SE SITUARÁN DE TAL MODO QUE LA CARA DEL TEXTO SE ORIENTE HACIA EL TRÁFICO, FORMANDO EN PLANTA EL PANEL UN ÁNGULO DE 5-10º CON LA NORMAL DEL EJE.

SERIE	SERIE B						
	SEÑAL TIPO	1	2	3	4	5	6
altura (H)	arcén > 1,50 m	1.80	1.80	1.80	1.80	1.80	1.80
	arcén < 1,50 m	1.50	1.50	1.50	1.50	1.50	1.50
MEDIDAS TUBO mm.	T	100	100	100	100	100	120
	P	50	60	50	50	60	60
	E	3	3	3	3	3	3
CIMENTACI. m.	A	0.70	0.80	0.55	0.60	0.70	0.80
	B	0.40	0.50	0.40	0.40	0.40	0.50
	Z	0.70	0.70	0.70	0.70	0.70	0.80

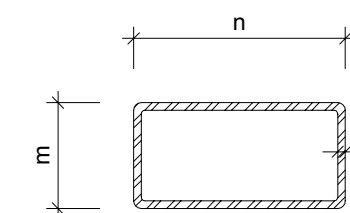
SECCIÓN E-E



DETALLE-3



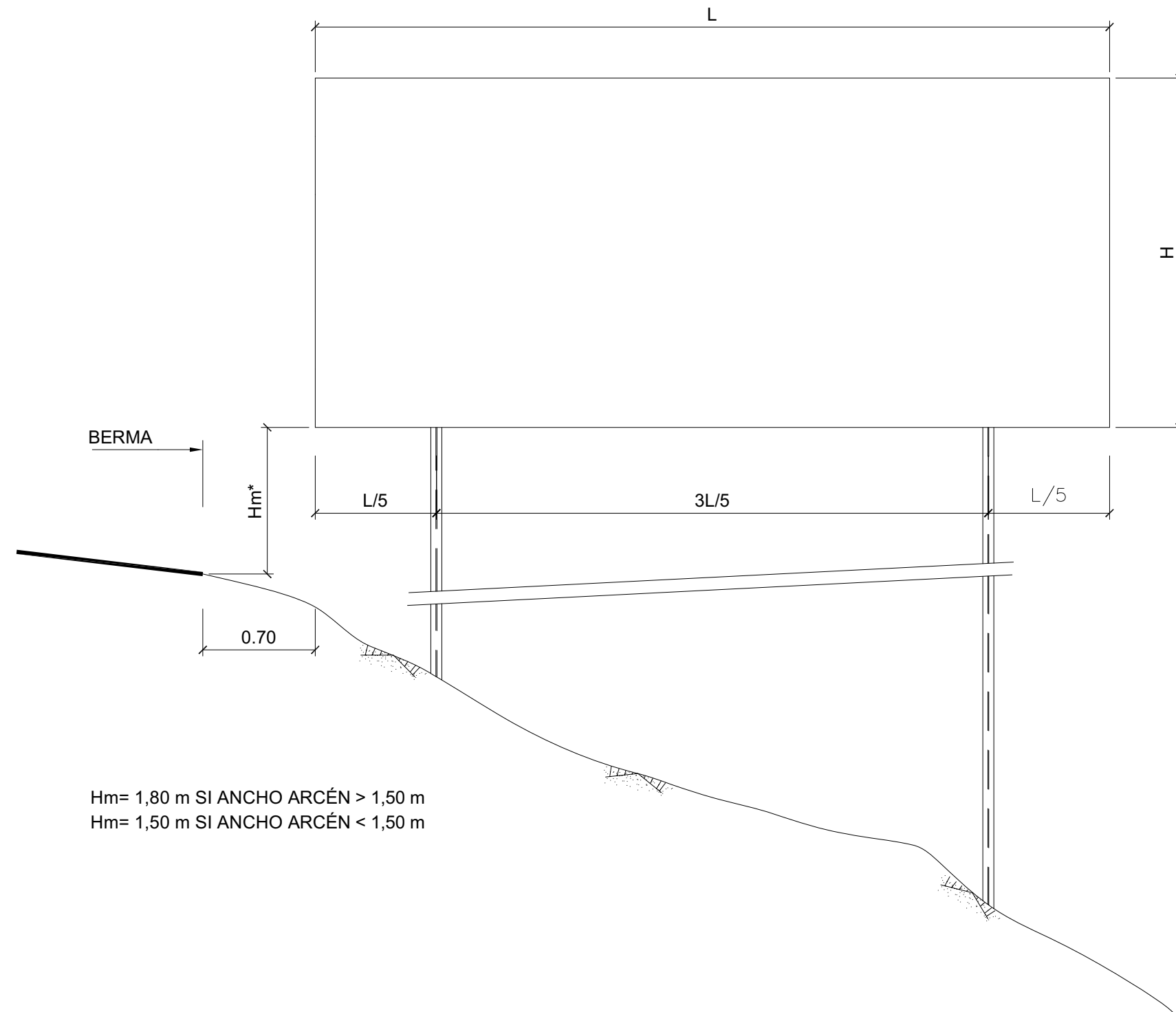
SECCIÓN F-F



## TAMAÑO DE LAS SEÑALES

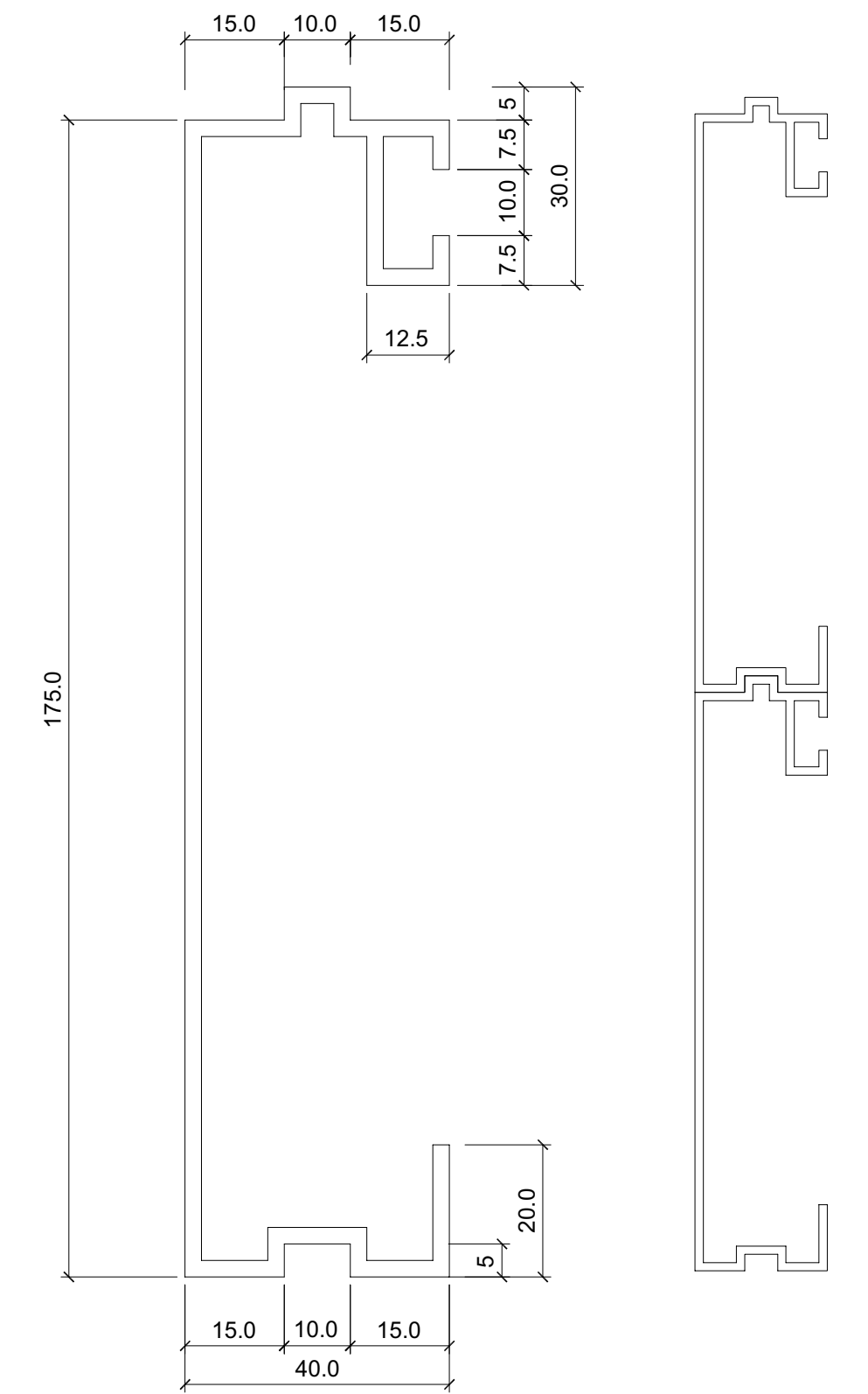
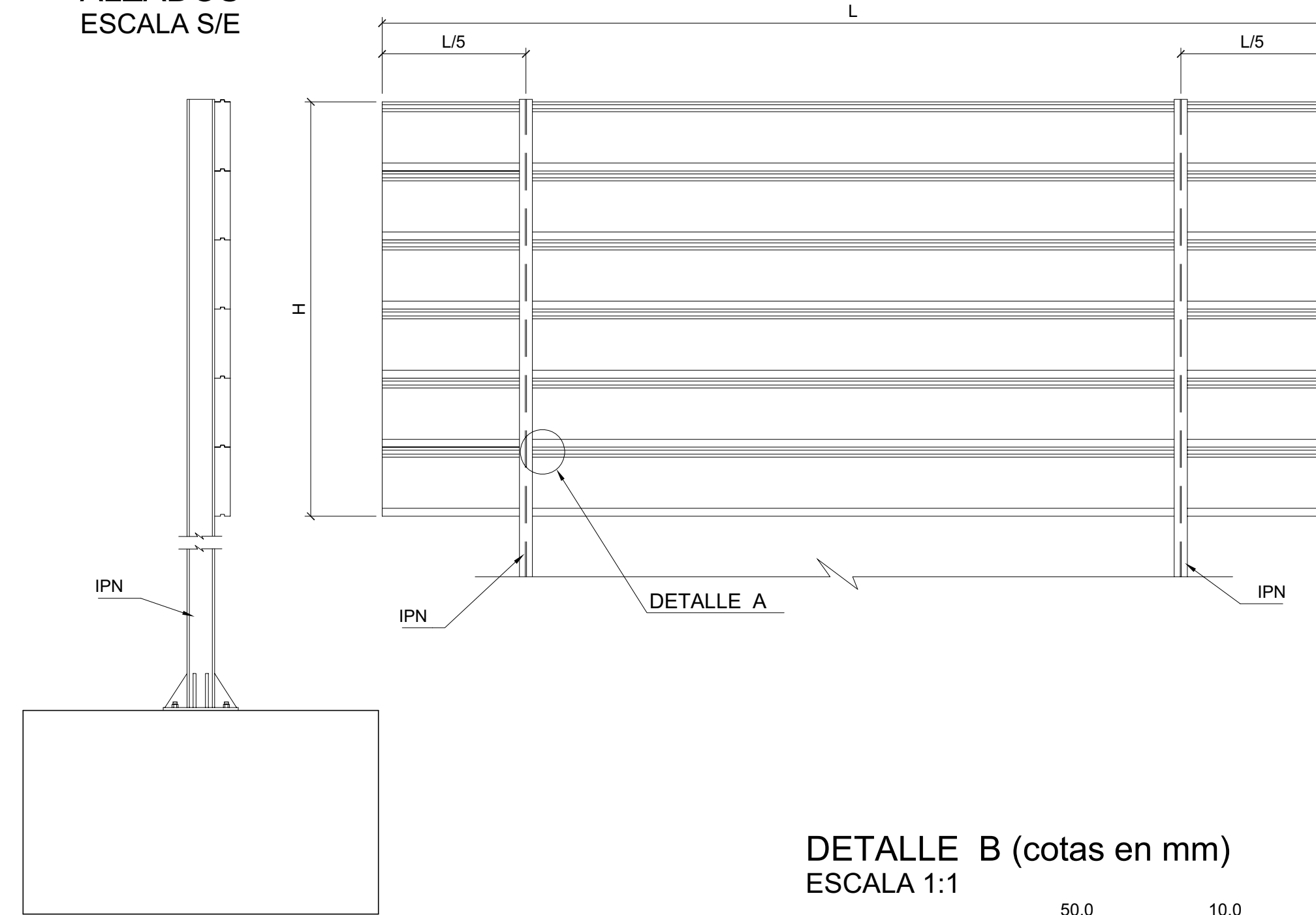
TIPO DE SEÑAL	1 y 2 (L)	3 (D)	4 (D)	5 y 7 (D)	6 y 8 (D, X)
CLASE DE CARRETERA SERIE A AUTOPISTA AUTOVIA VIA RAPIDA	1.75	1.20	1.20	1.20	1.20
	1.20	1.20	1.20	1.20	1.80
SERIE B CARRETERA CONVENCIO. CON ARCENES	1.35	0.90	0.90	0.90	0.90
	0.90	0.90	0.90	0.90	1.35
SERIE C CARRETERA CONVENCIO. SIN ARCENES	0.90	0.60	0.60	0.60	0.60
	0.60	0.60	0.60	0.60	0.90

ESQUEMA DE CARTEL  
ESCALA S/E



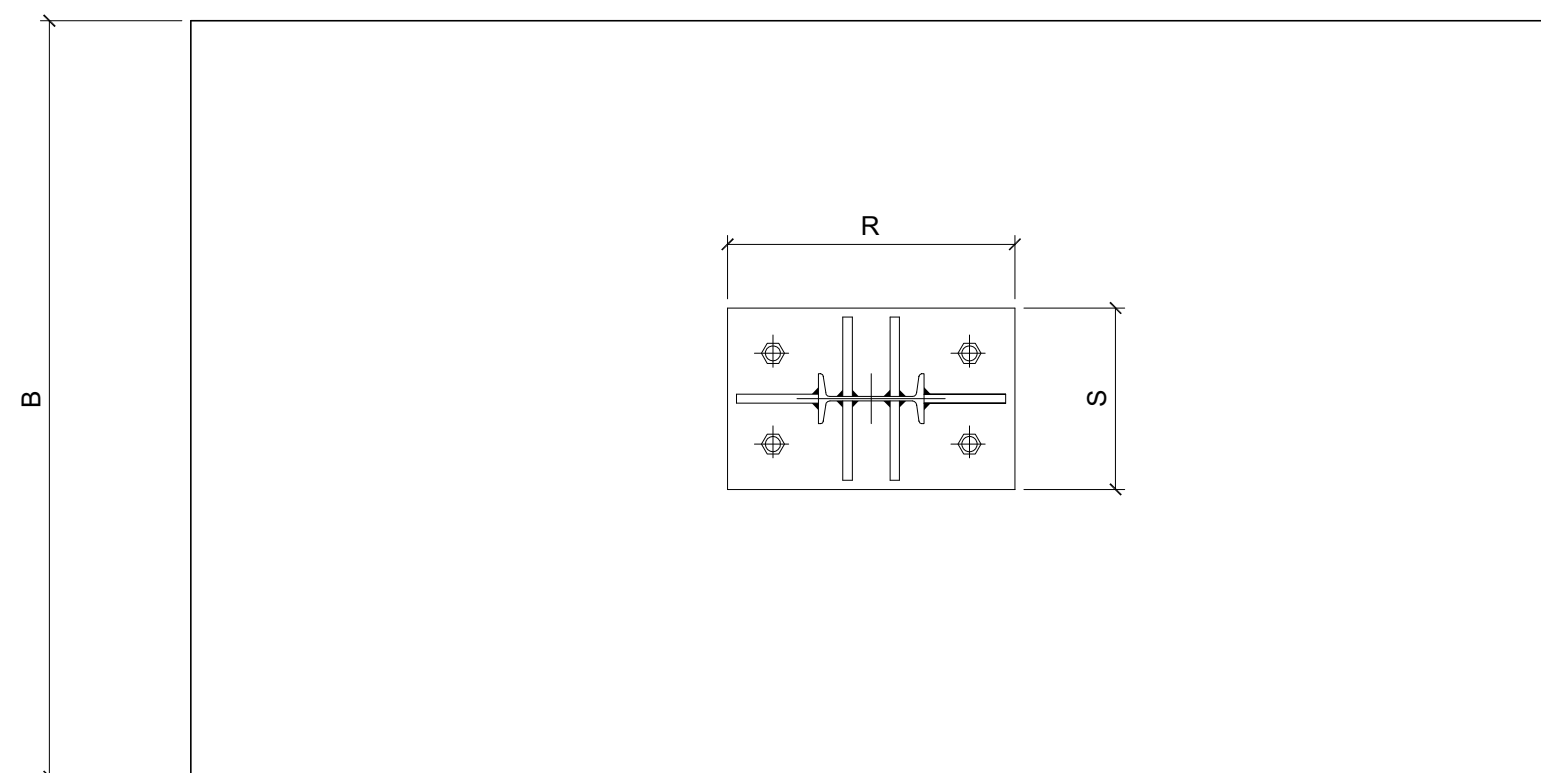
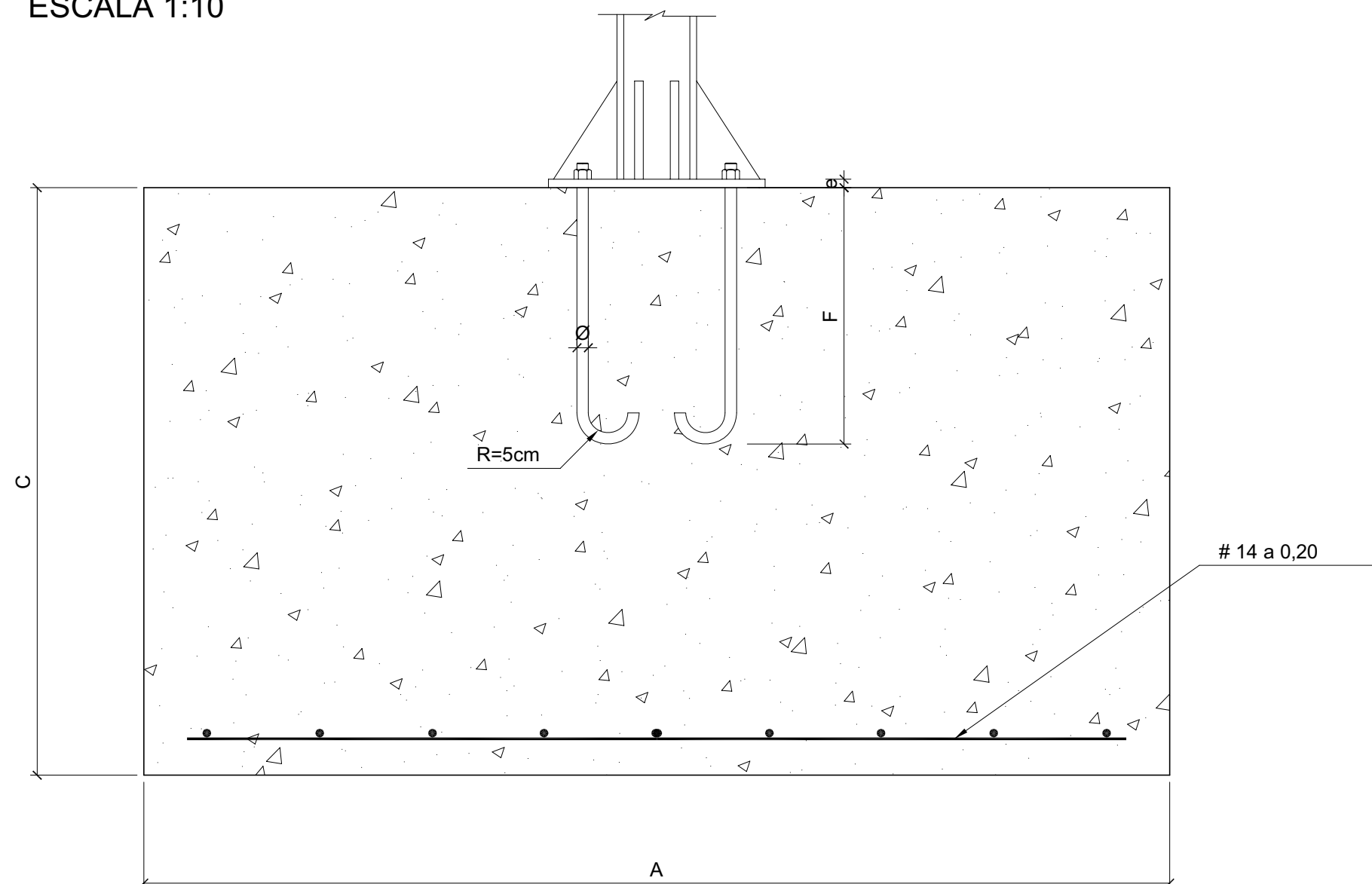
CARTEL DE PREAVISO

CARTEL CON PERFILES GALVANIZADOS  
ALZADOS  
ESCALA S/E

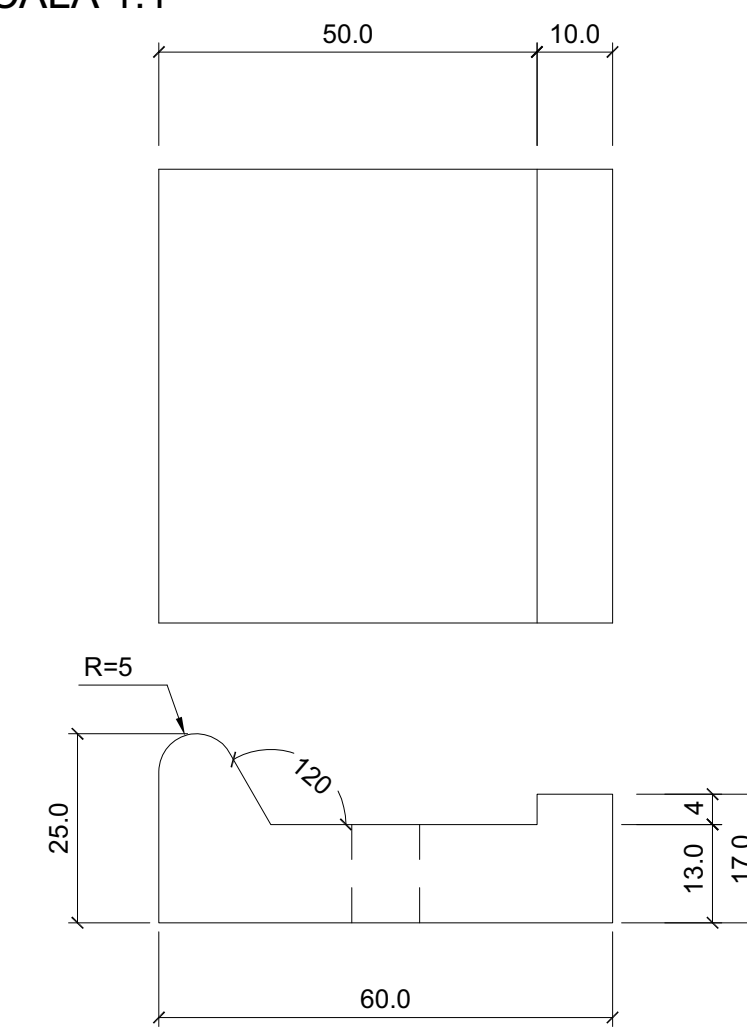


PERFIL DE ALUMINIO  
PARA CARTELES (cotas en mm)  
ESCALA 1:1

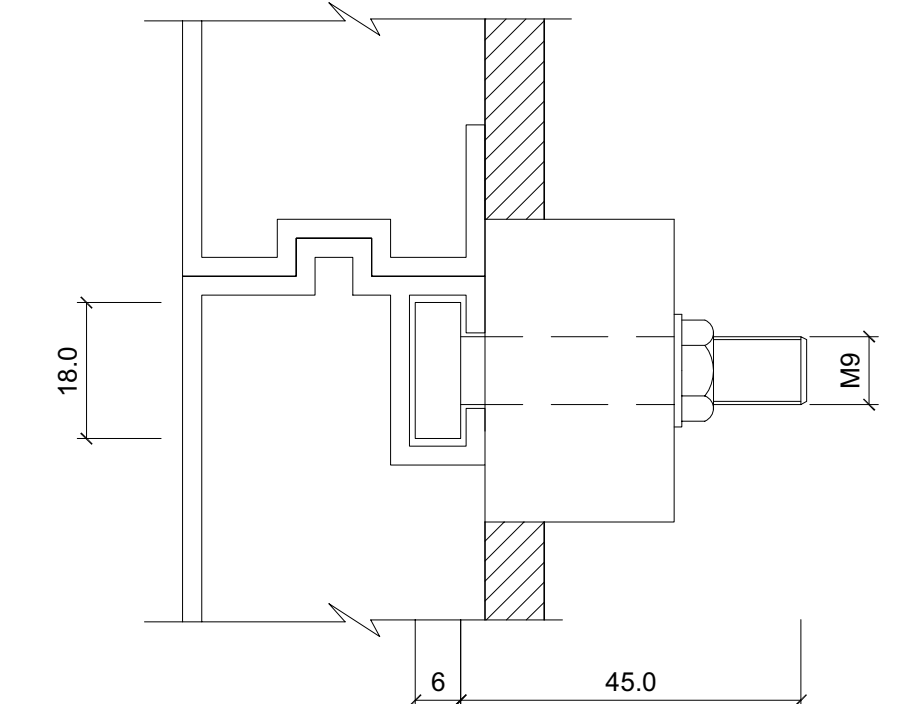
CIMENTACION Y ANCLAJE  
ESCALA 1:10



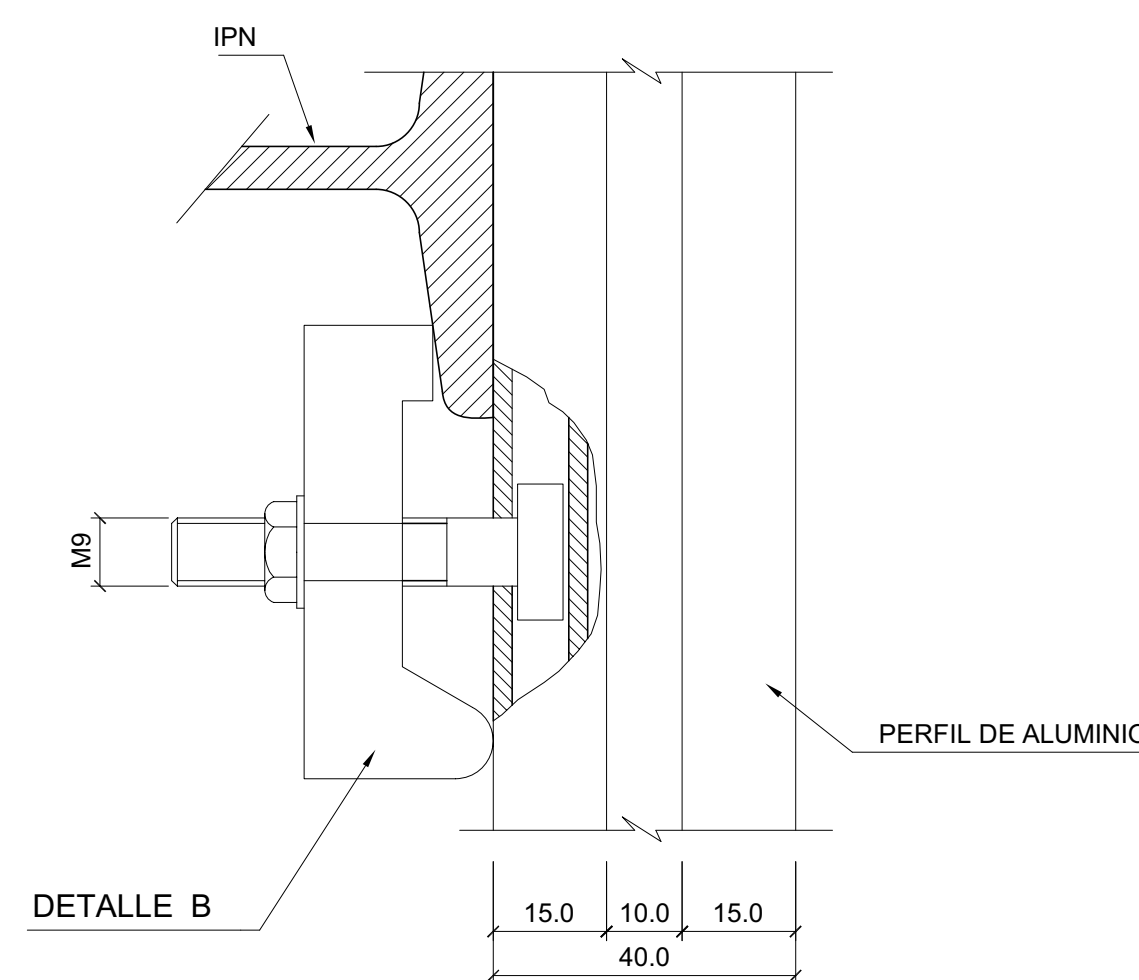
DETALLE B (cotas en mm)  
ESCALA 1:1



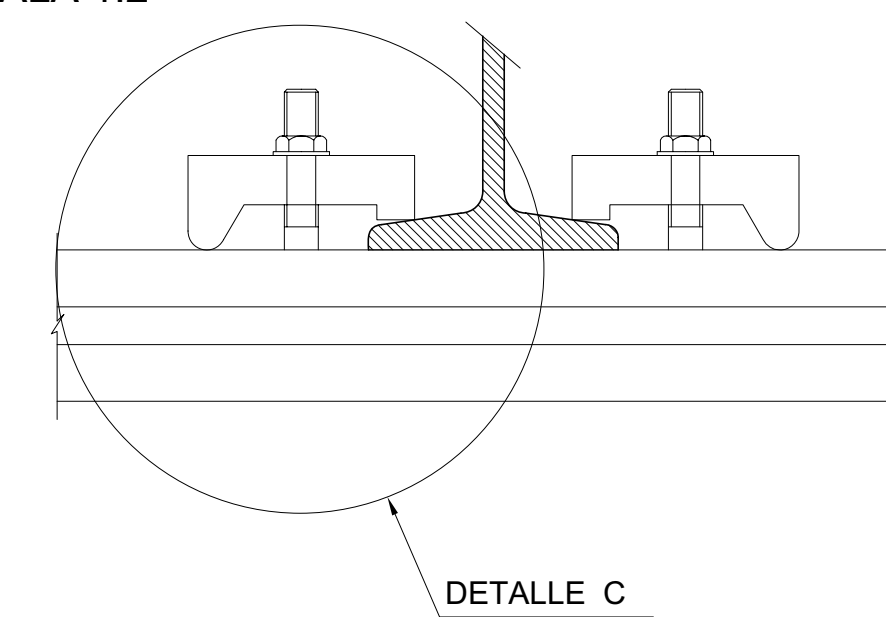
DETALLE A (cotas en mm)  
ESCALA 1:1



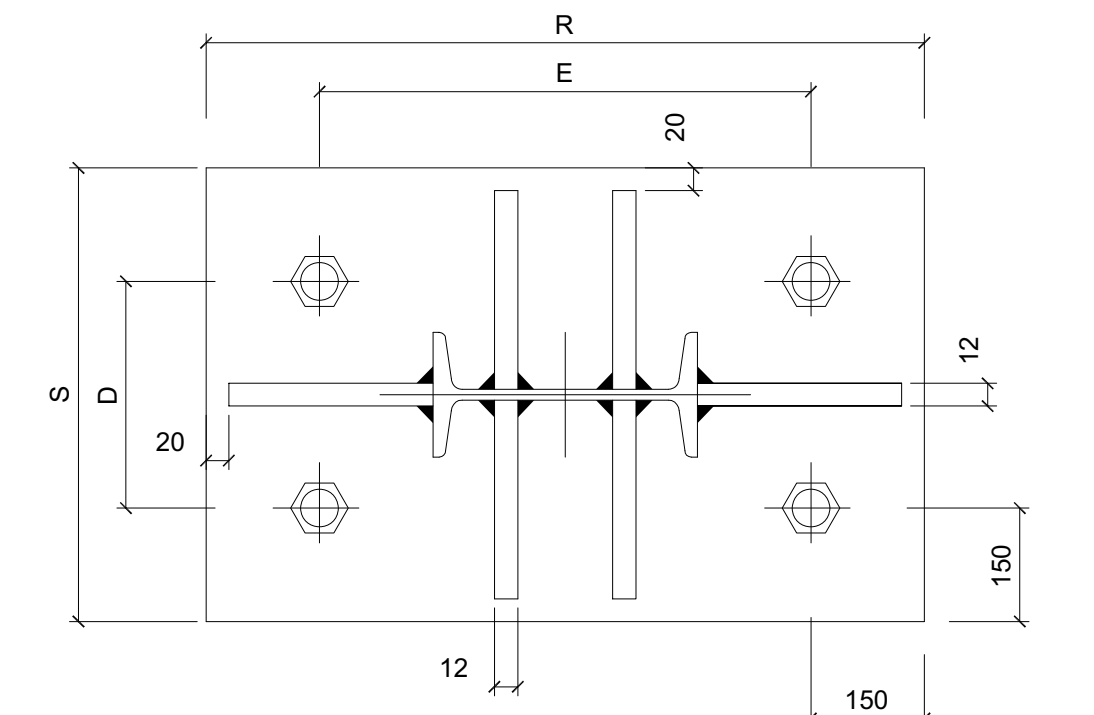
ESCALA 1:1



DETALLE DE UNION DE PERFILES AL SOPORTE  
ESCALA 1:2

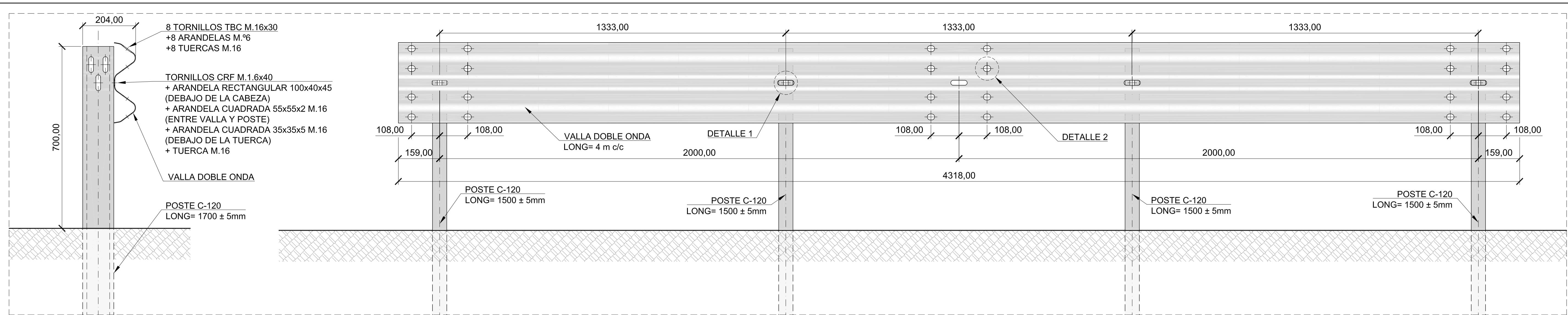


PLACA DE ANCLAJE Y RIGIDIZADORES  
(cotas en mm)  
ESCALA 1:4



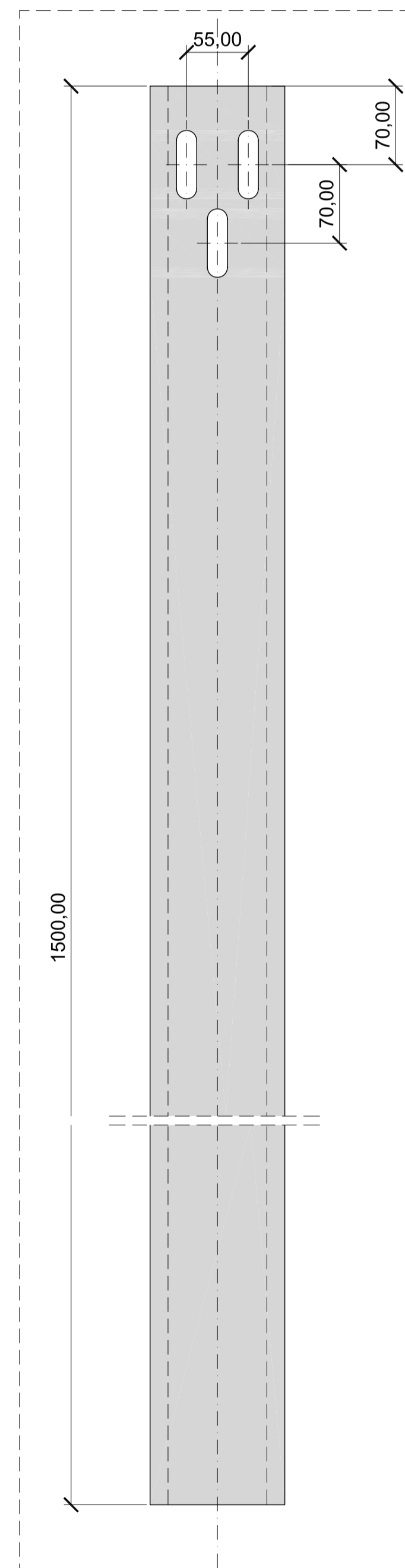
CUADRO DE COTAS PARA CARTELES

SUPERFICIE DEL PANEL EN m (LxH)	IPN	CIMENTACION (m)			PLACA DE ANCLAJE (mm)					ANCLAJES (mm)
		A	B	C	D	E	F	R	S	
S<4m <sup>2</sup>	14	1.80	1.00	1.50	120	260	60	560	420	4 Ø20
4<S<6m <sup>2</sup>	16	2.30	1.00	1.50	140	300	60	600	440	4 Ø20
6<S<8m <sup>2</sup>	18	2.50	1.10	1.50	160	340	60	640	460	4 Ø20
8<S<10m <sup>2</sup>	20	2.60	1.10	2.00	180	380	60	680	480	4 Ø20
10<S<12m <sup>2</sup>	22	2.50	1.40	2.00	190	410	60	710	490	4 Ø20
12<S<14m <sup>2</sup>	24	2.70	1.50	2.00	210	450	60	750	510	4 Ø20
14<S<16m <sup>2</sup>	26	3.00	1.50	2.00	230	490	140	790	530	4 Ø30
16<S<18m <sup>2</sup>	28	3.10	1.50	2.00	240	520	140	820	540	4 Ø30
18<S<20m <sup>2</sup>	28	3.30	1.50	2.00	240	520	140	820	540	4 Ø30
20<S<22m <sup>2</sup>	30	3.50	1.50	2.00	260	560	140	860	560	4 Ø30

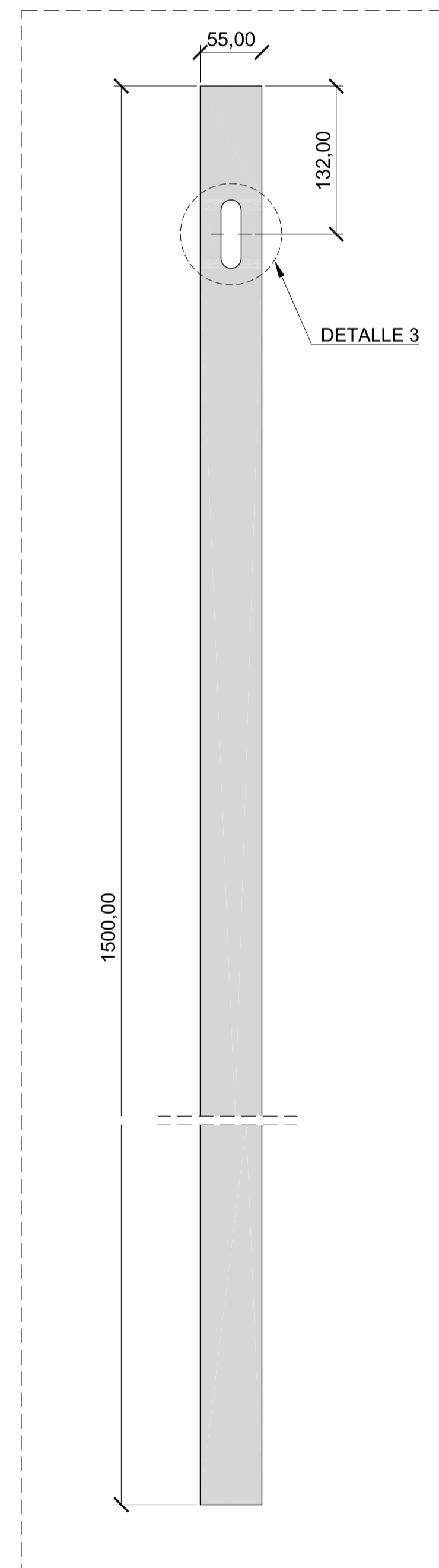


MONTAJE POSTE C-120. VISTA  
ESCALA: 1/8

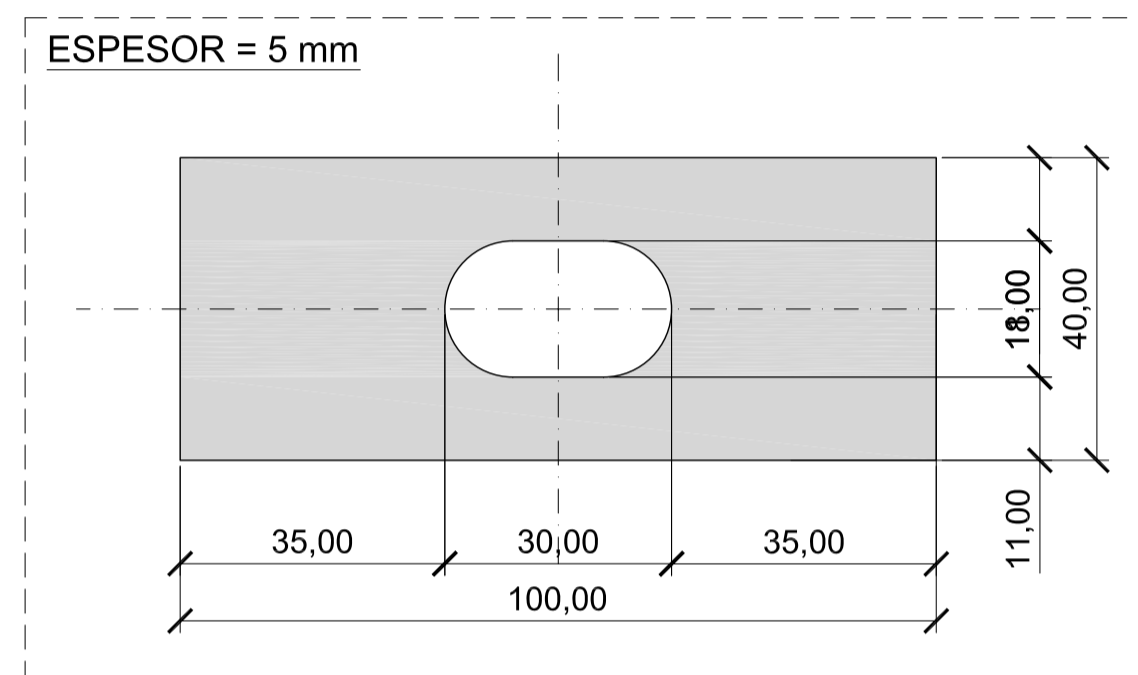
MONTAJE POSTE C-120. ALZADO  
ESCALA: 1/8



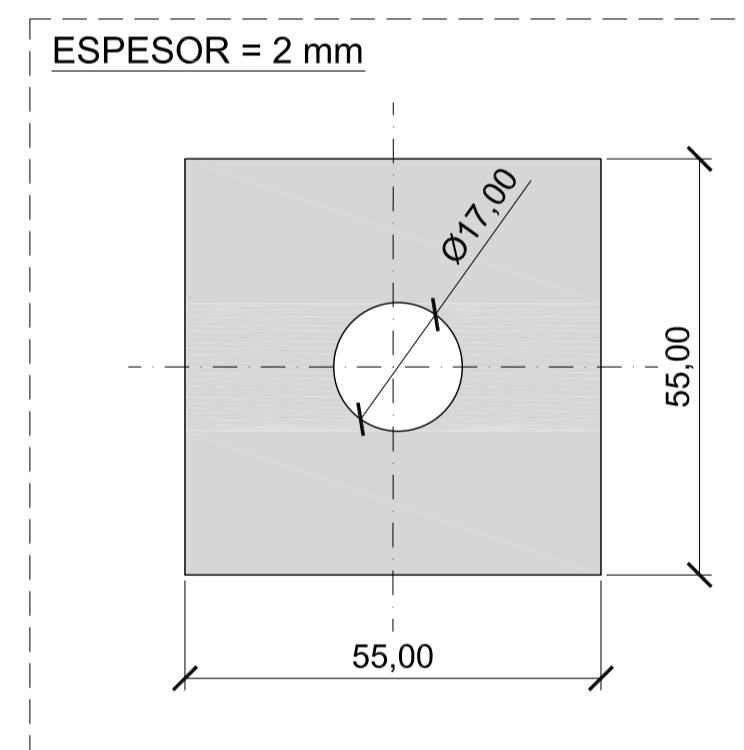
POSTE C-120. ALZADO  
ESCALA: 1/4



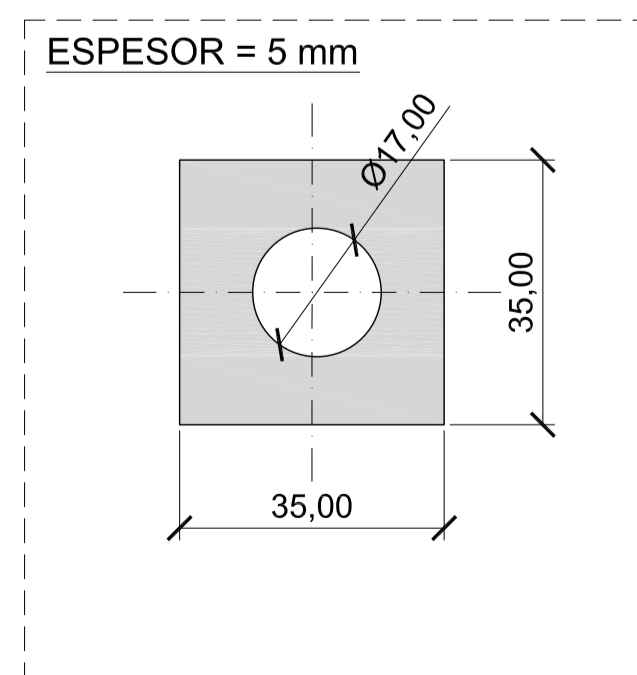
POSTE C-120. ALZADO  
ESCALA: 1/4



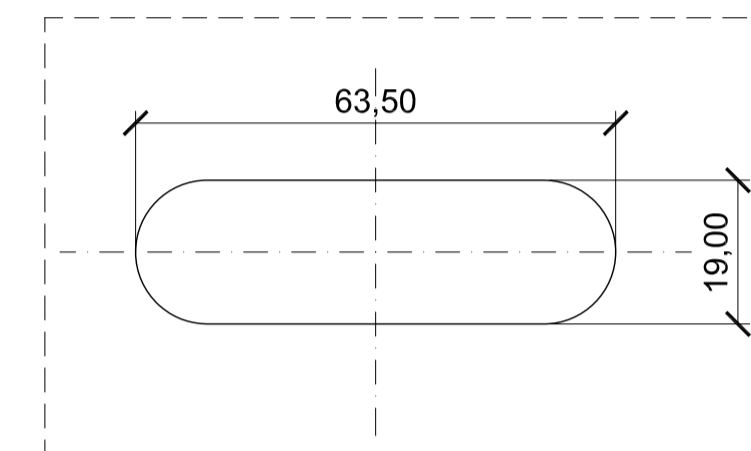
ARANDELA RECTANGULAR  
ESCALA: 1/10



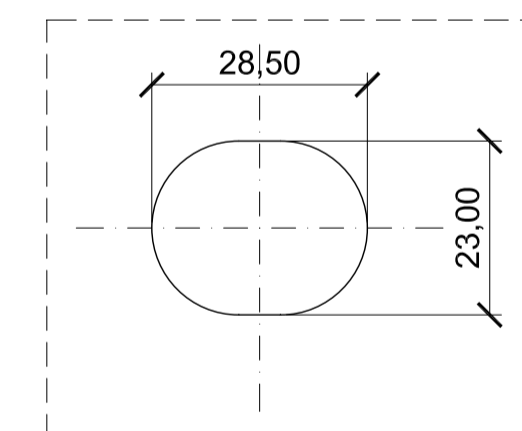
ARANDELA CUADRADA 1  
ESCALA: 1/10



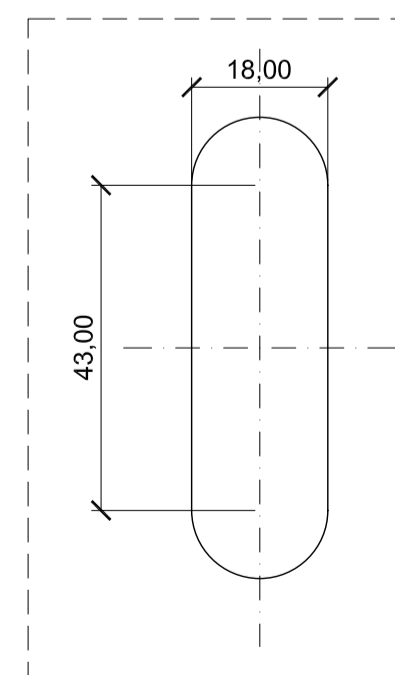
ARANDELA CUADRADA 2  
ESCALA: 1/10



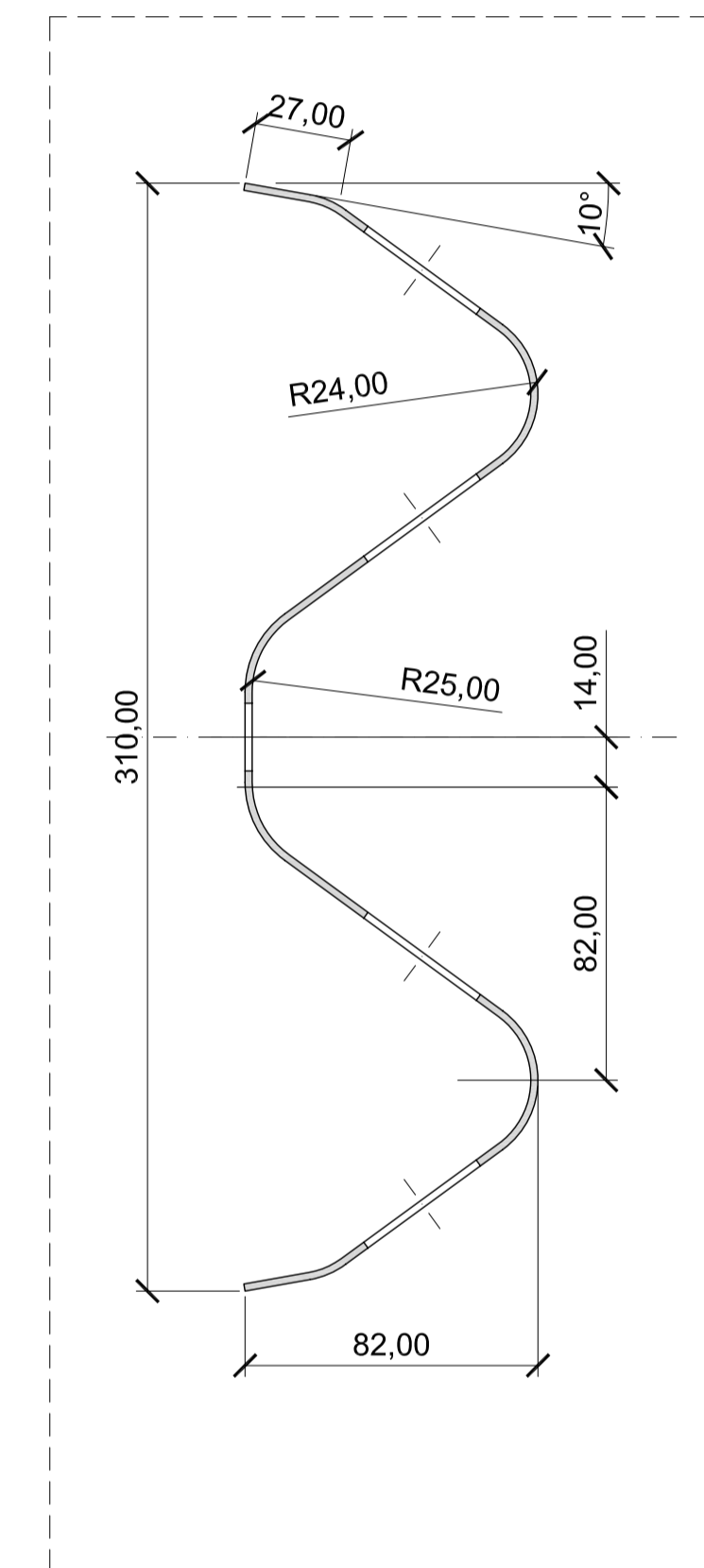
DETALLE 1  
ESCALA: 1/10



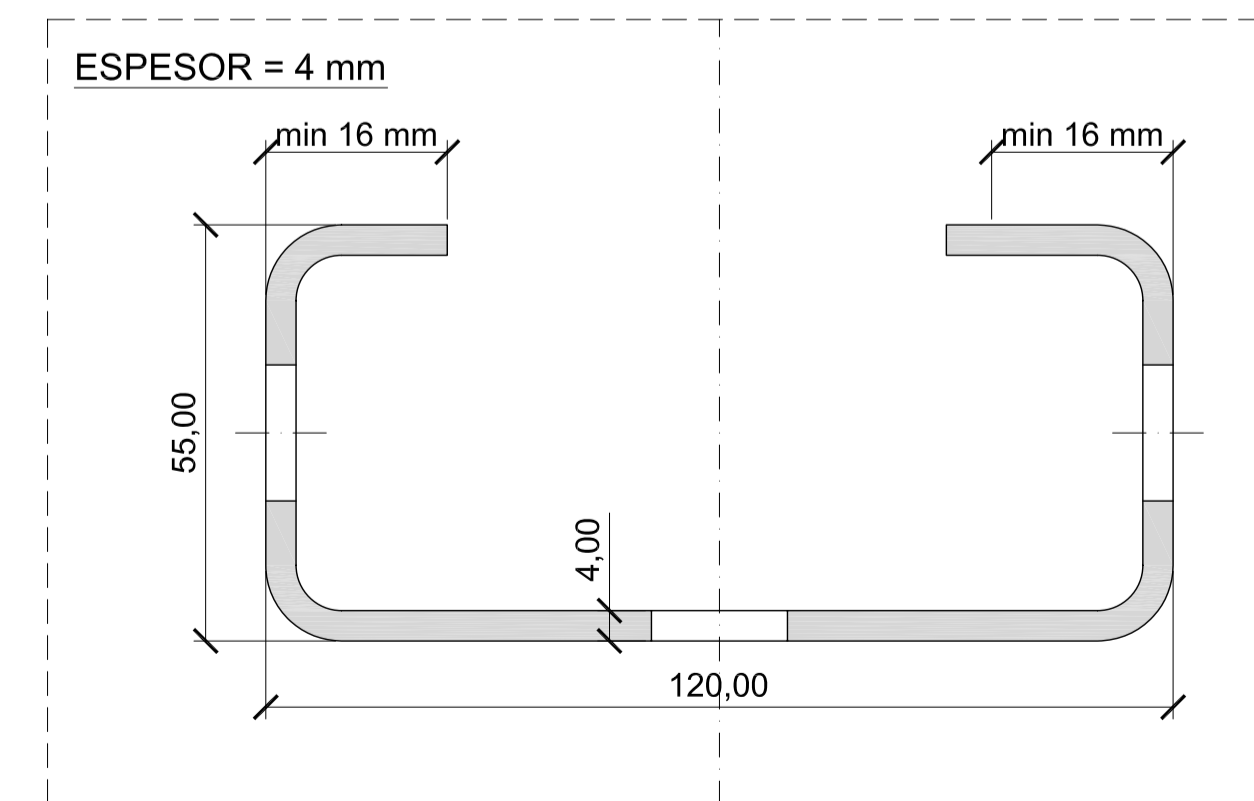
DETALLE 2  
ESCALA: 1/10



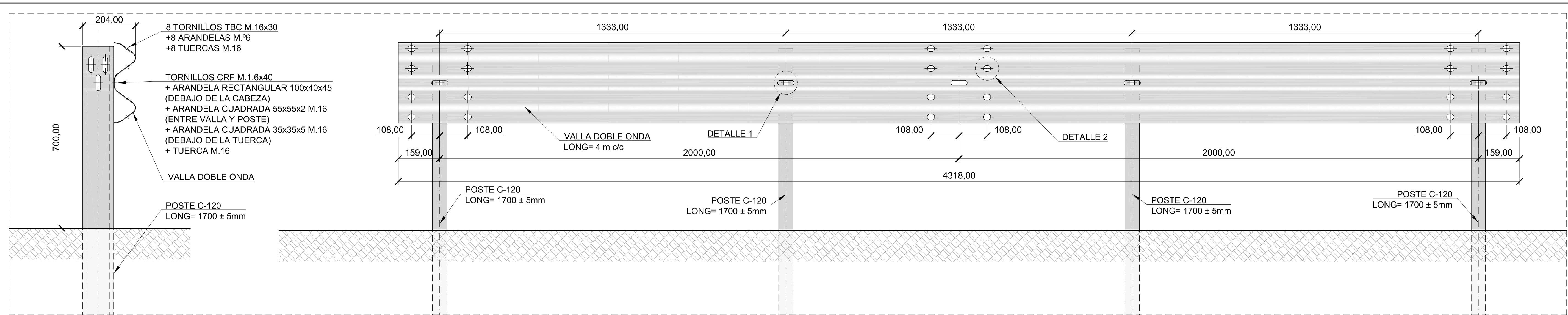
DETALLE 3  
ESCALA: 1/10



SECCIÓN A-A  
ESCALA: 1/40

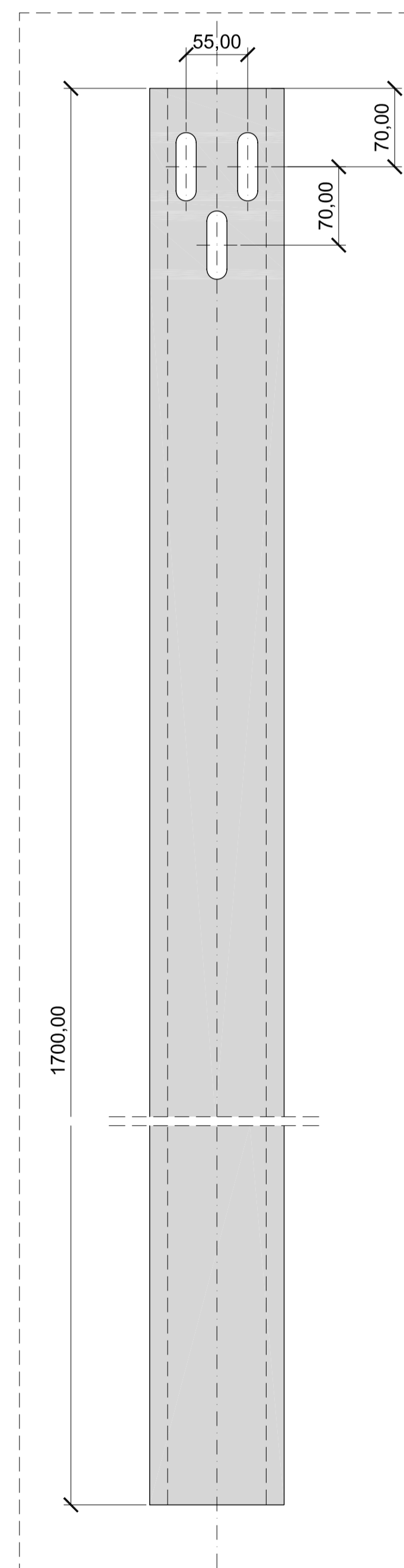


POSTE C-120. PLANTA  
ESCALA: 1/10

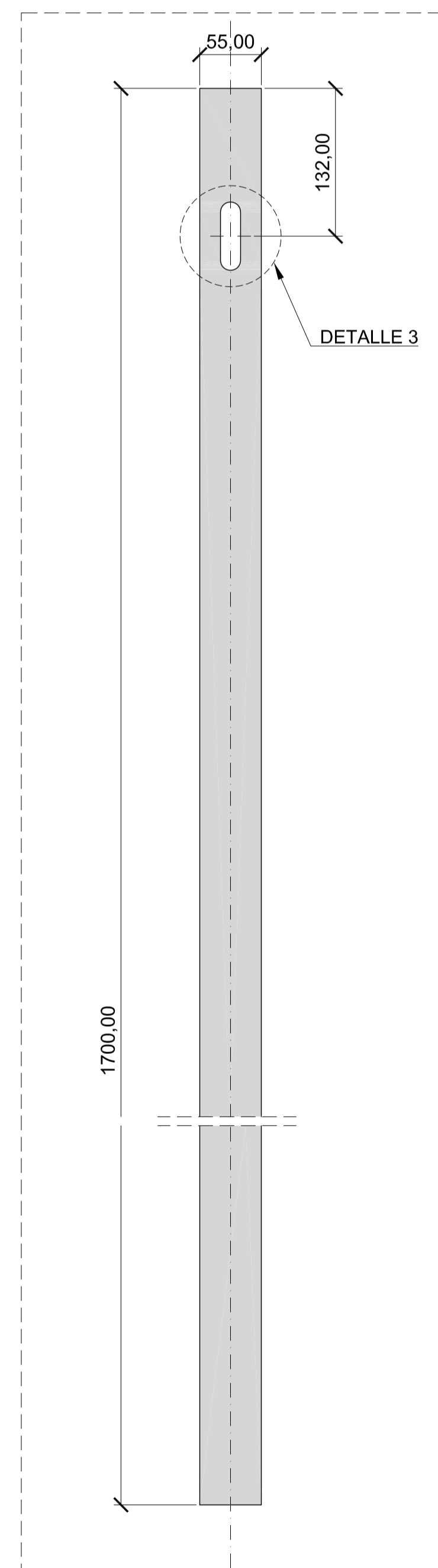


MONTAJE POSTE C-120. VISTA  
ESCALA: 1/8

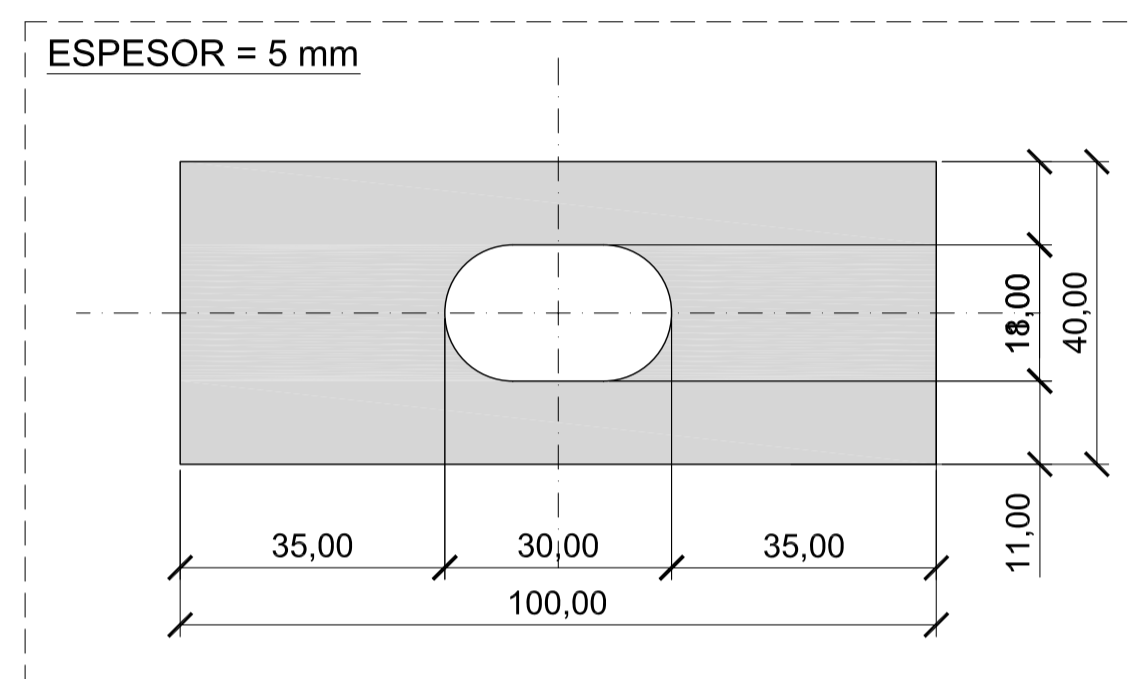
MONTAJE POSTE C-120. ALZADO  
ESCALA: 1/8



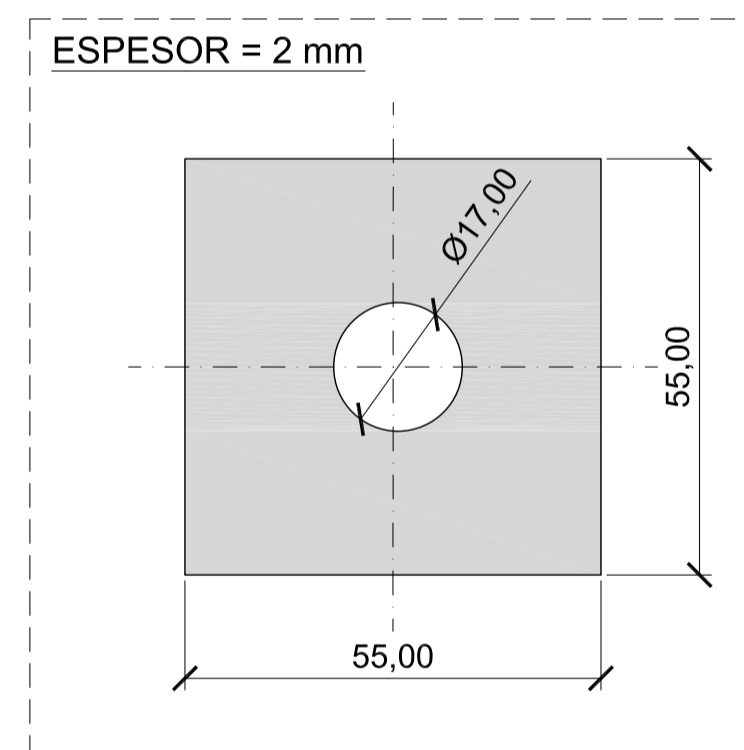
POSTE C-120. ALZADO  
ESCALA: 1/4



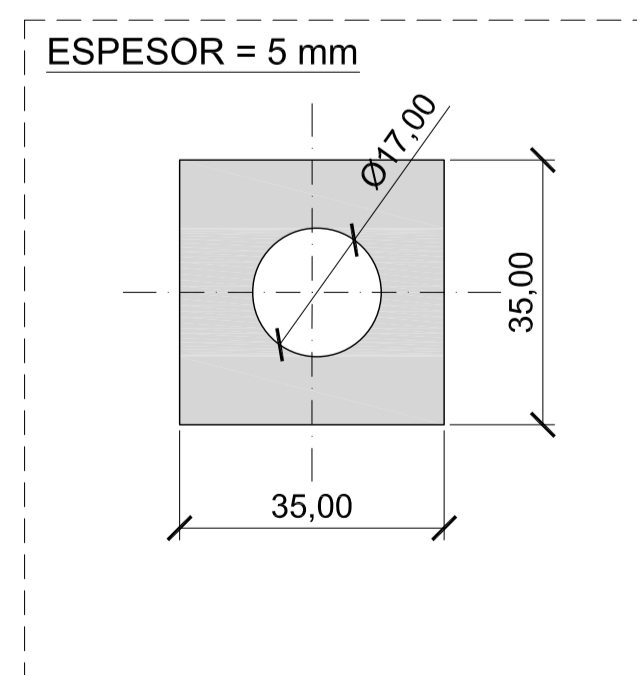
POSTE C-120. ALZADO  
ESCALA: 1/4



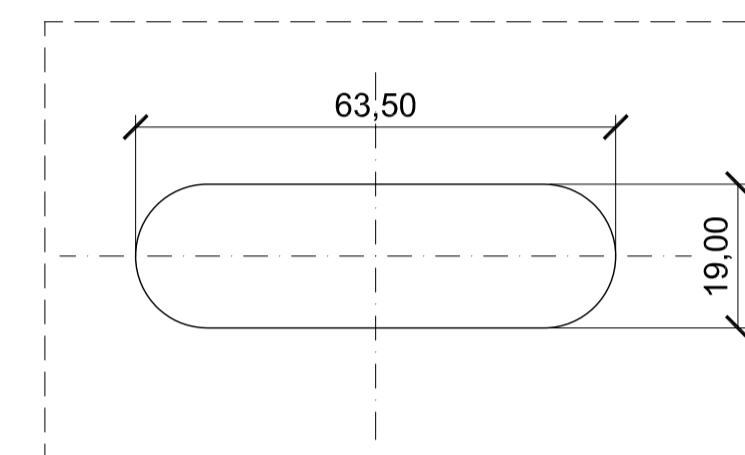
ARANDELA RECTANGULAR  
ESCALA: 1/10



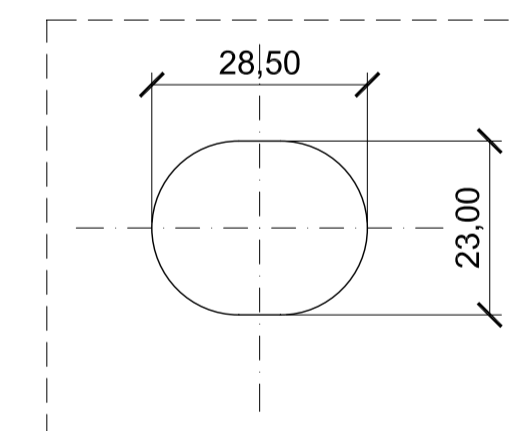
ARANDELA CUADRADA 1  
ESCALA: 1/10



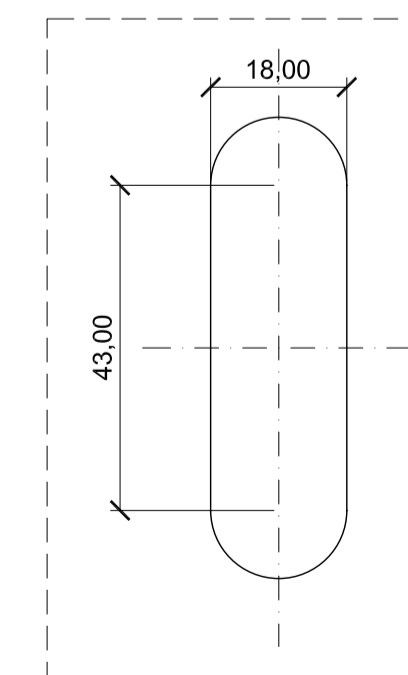
ARANDELA CUADRADA 2  
ESCALA: 1/10



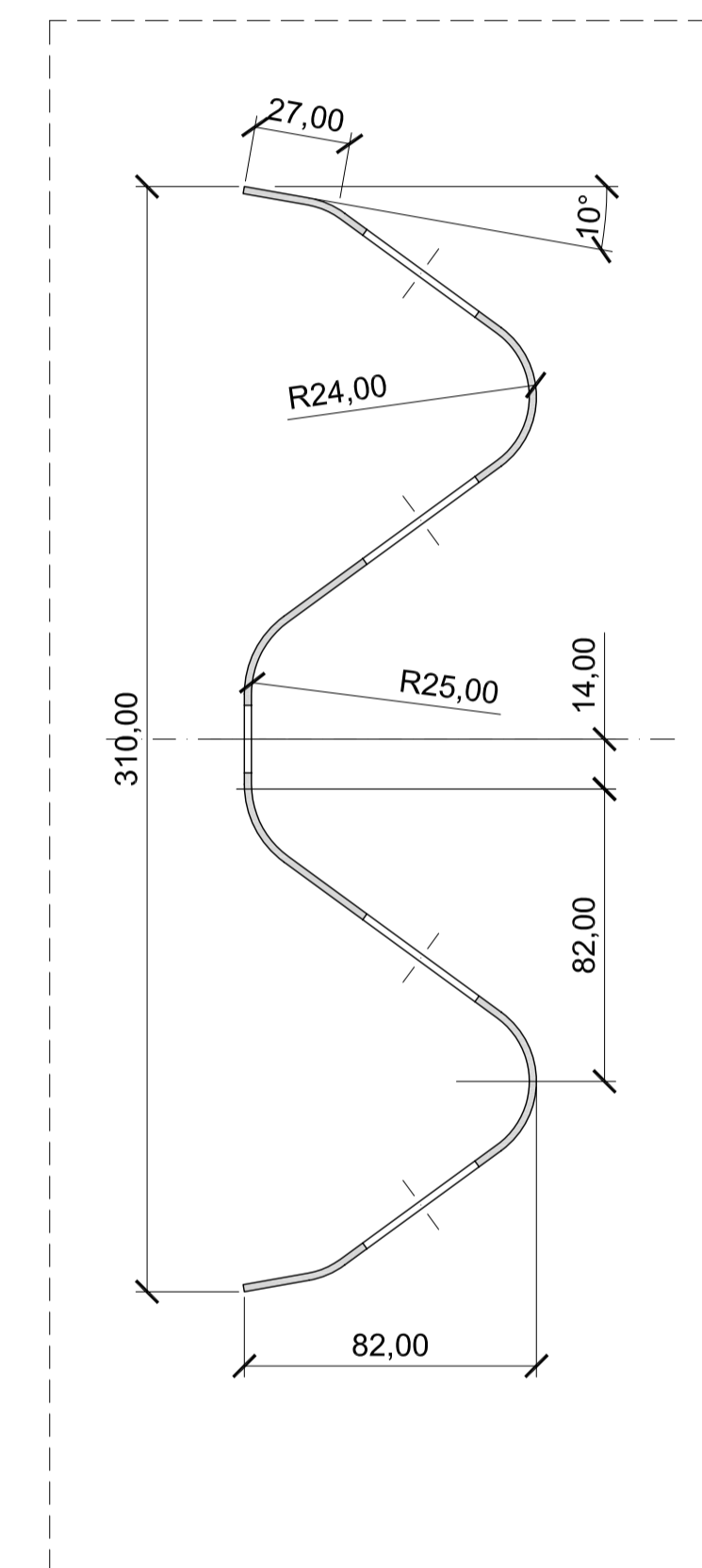
DETALLE 1  
ESCALA: 1/10



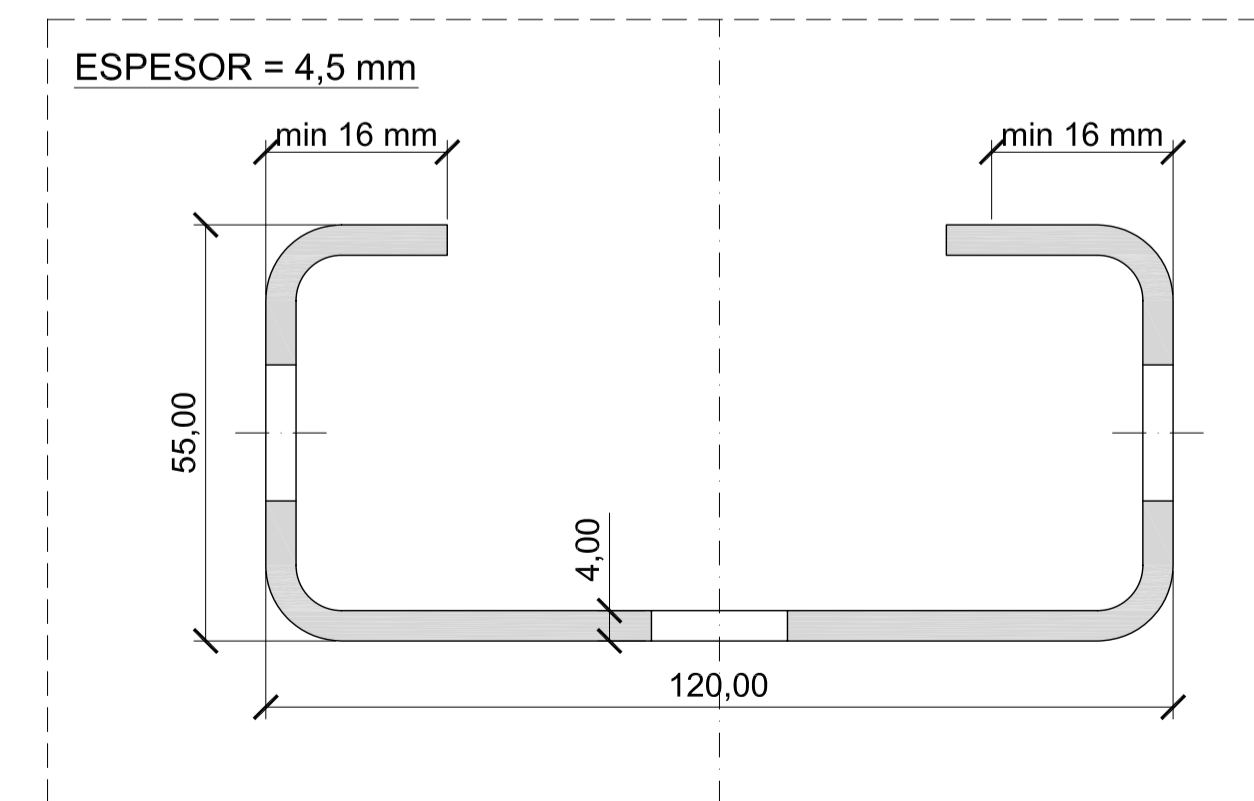
DETALLE 2  
ESCALA: 1/10



DETALLE 3  
ESCALA: 1/10

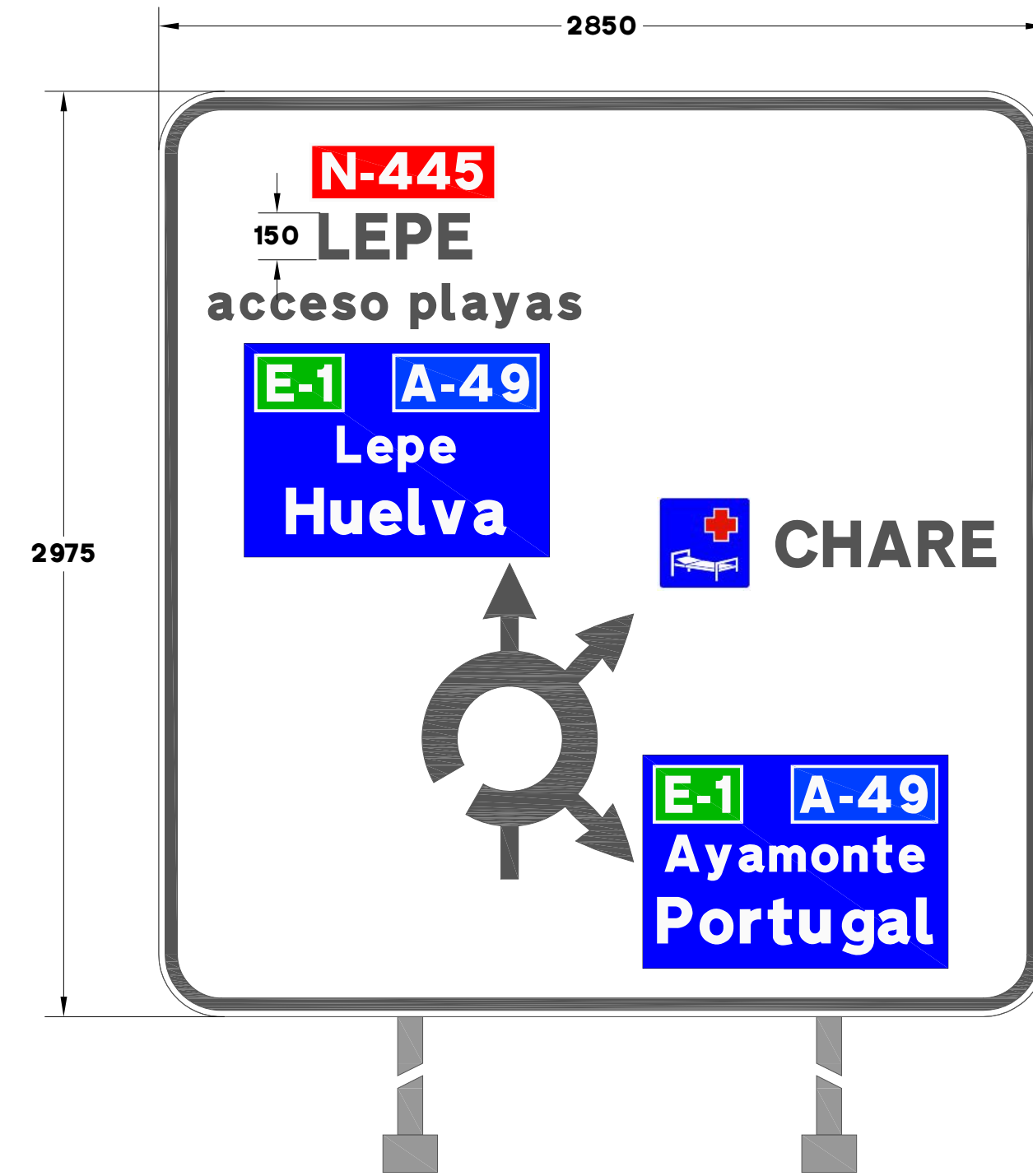


SECCIÓN A-A  
ESCALA: 1/40

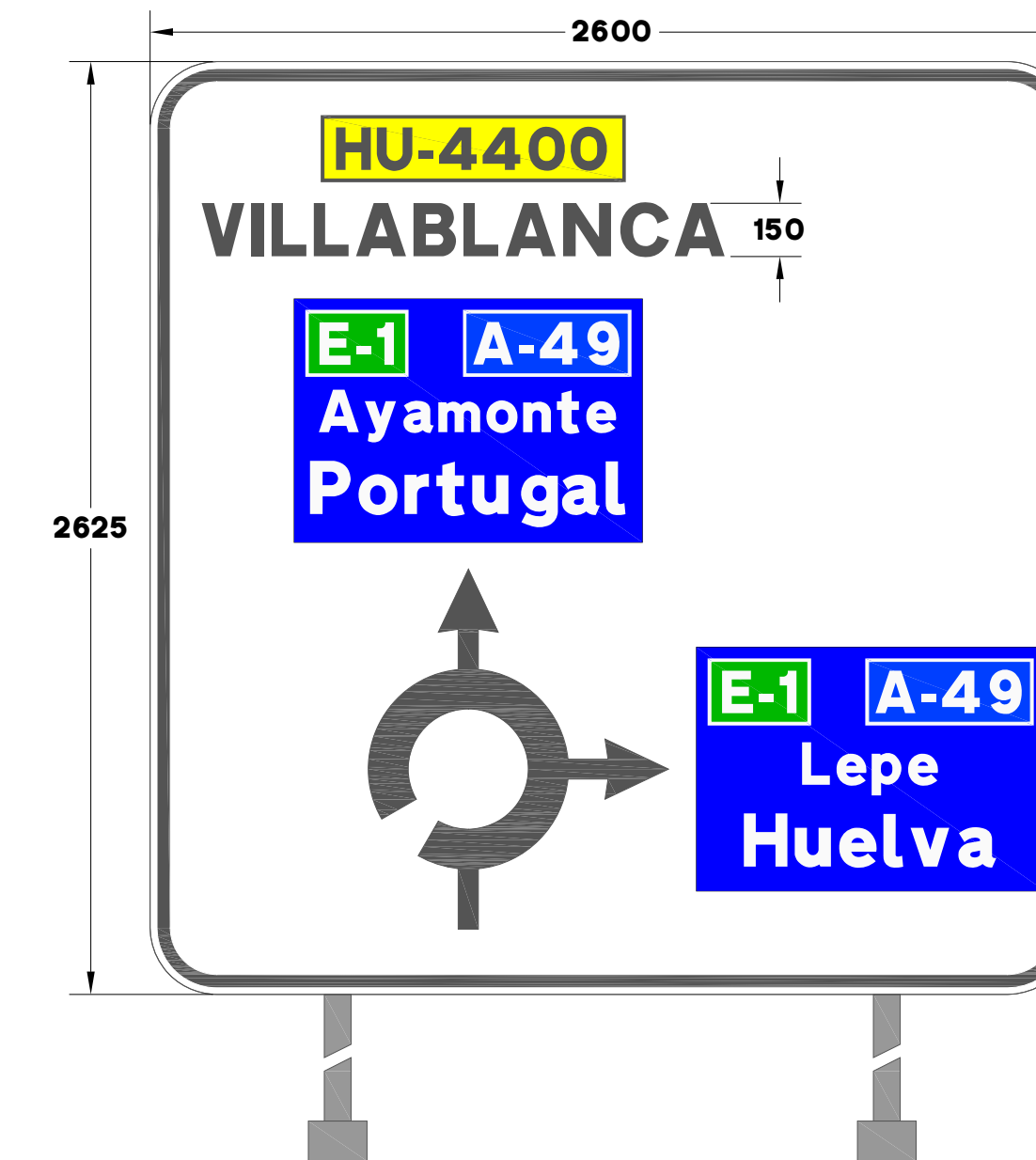


POSTE C-120. PLANTA  
ESCALA: 1/10

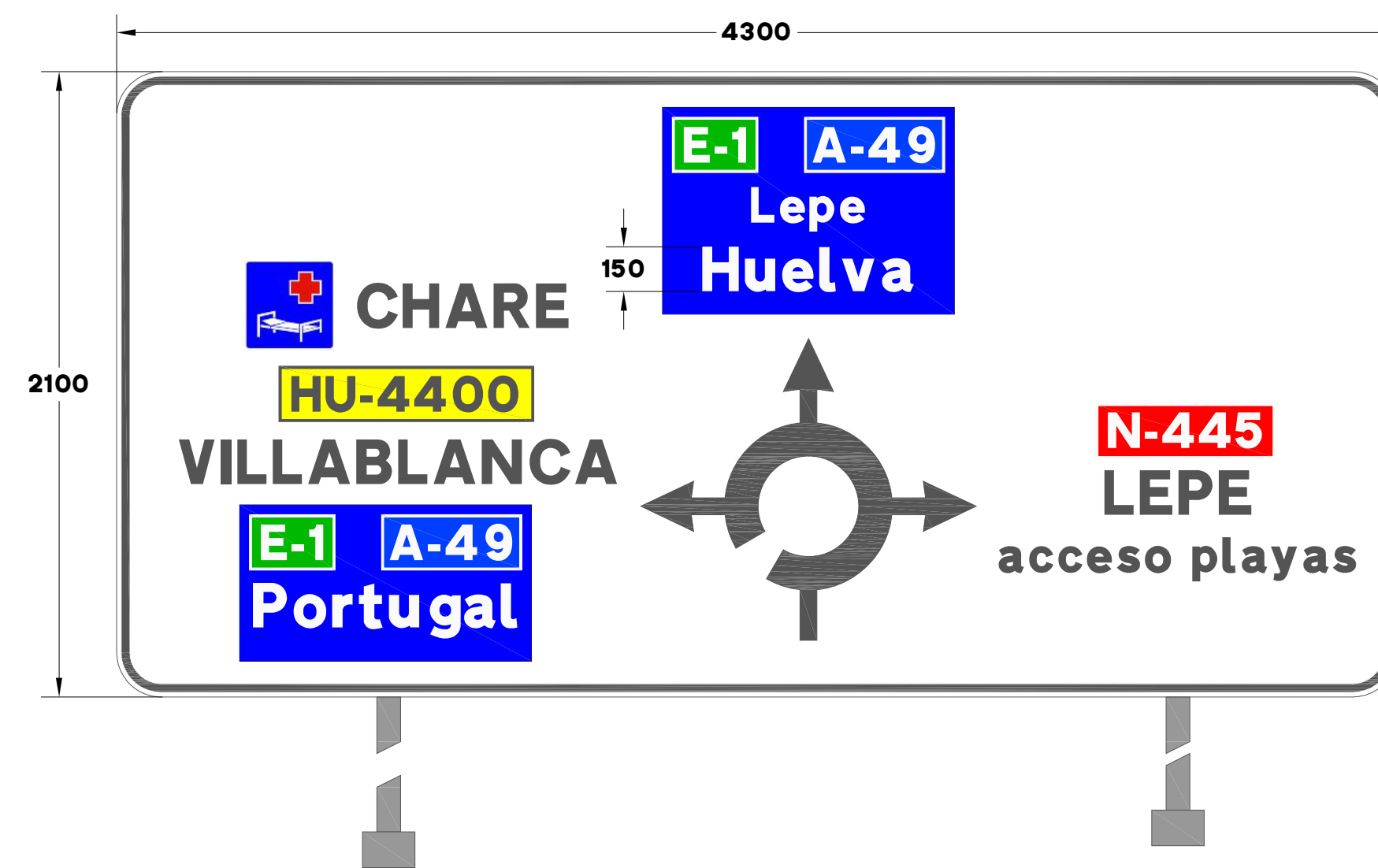
CARTELES



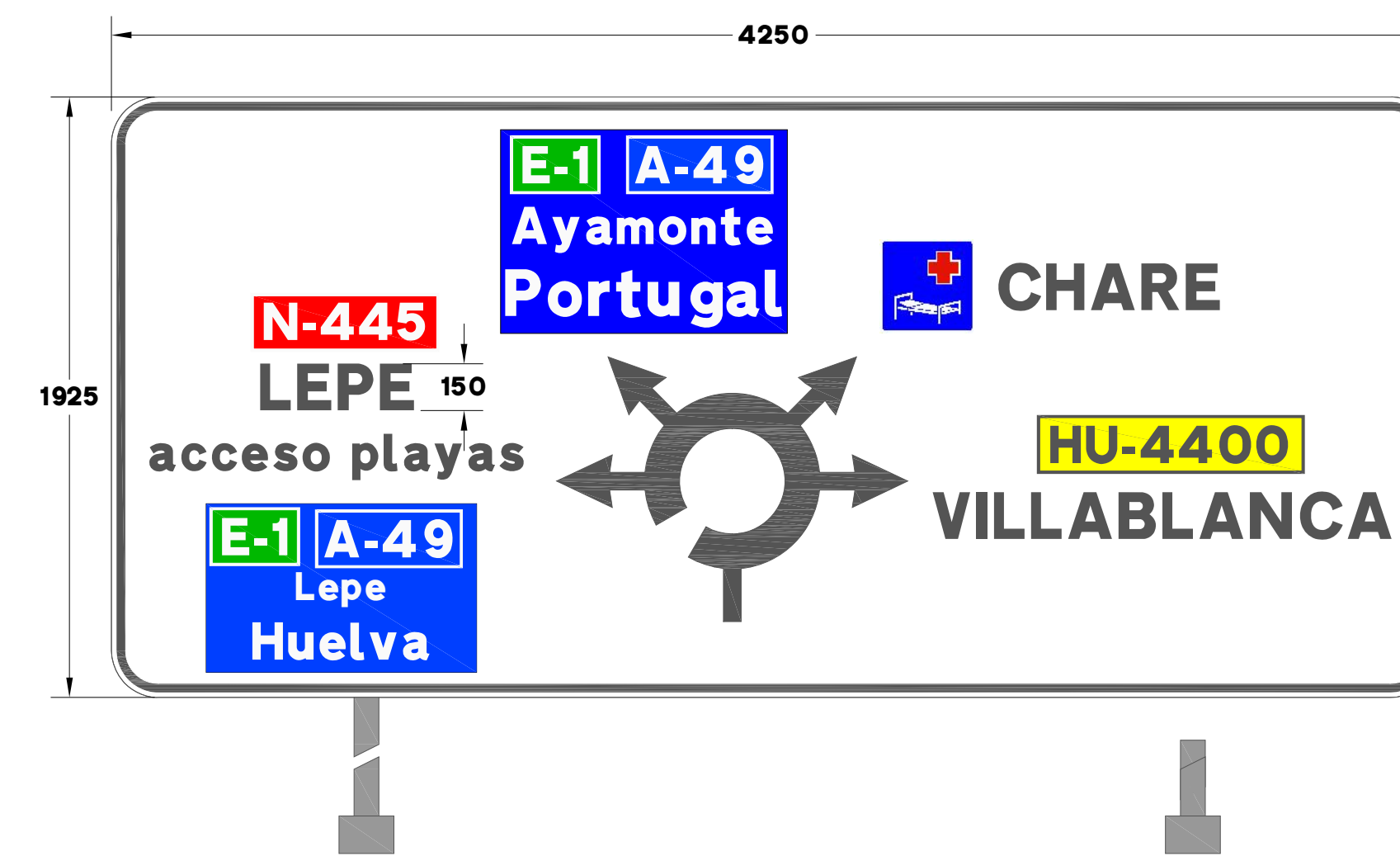
CARTEL 1



CARTEL 2



CARTEL 3



CARTEL 4

COTAS EN mm



