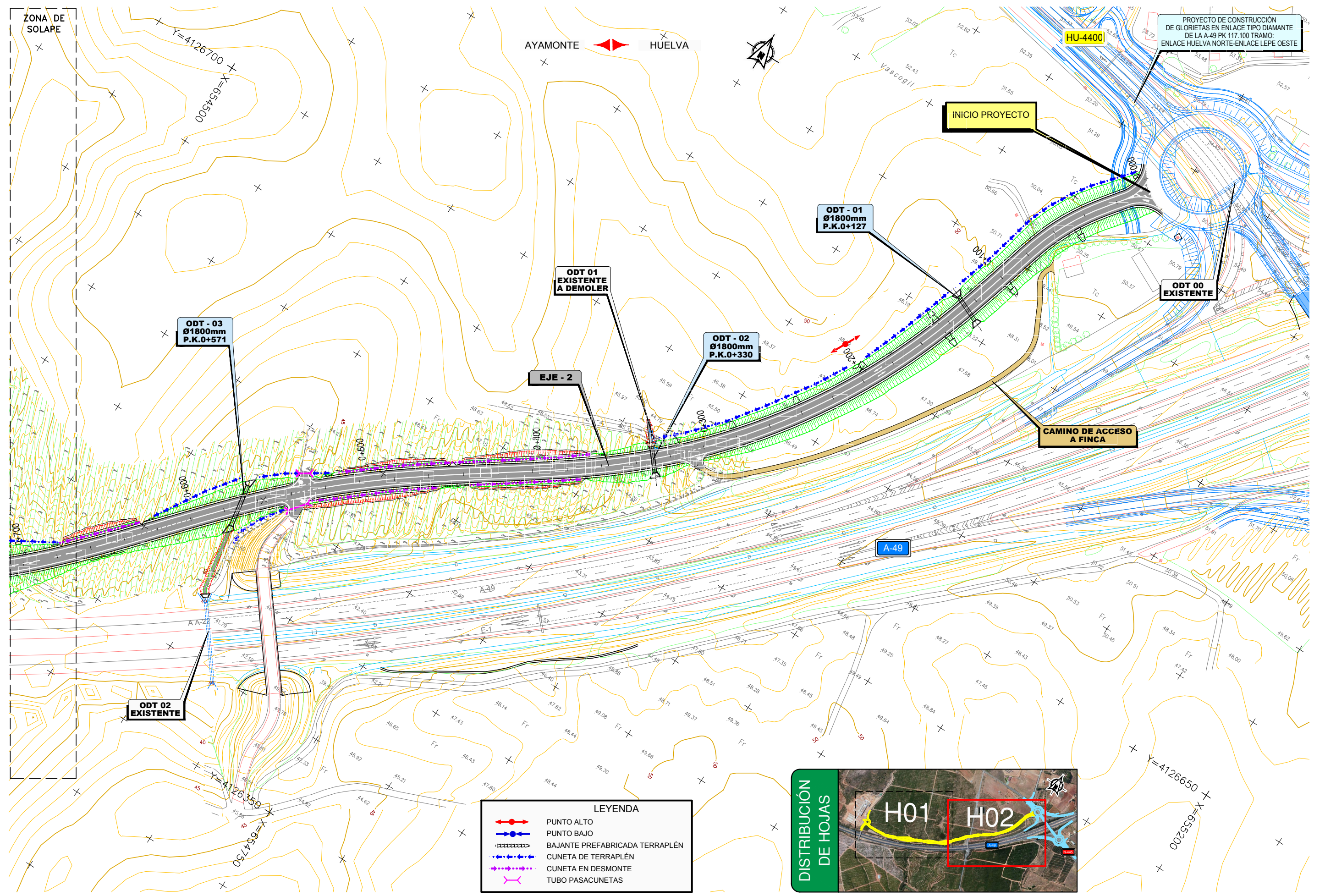




| LEYENDA |                                |
|---------|--------------------------------|
|         | PUNTO ALTO                     |
|         | PUNTO BAJO                     |
|         | BAJANTE PREFABRICADA TERRAPLÉN |
|         | CUNETA DE TERRAPLÉN            |
|         | CUNETA EN DESMONTE             |
|         | TUBO PASACUNETAS               |



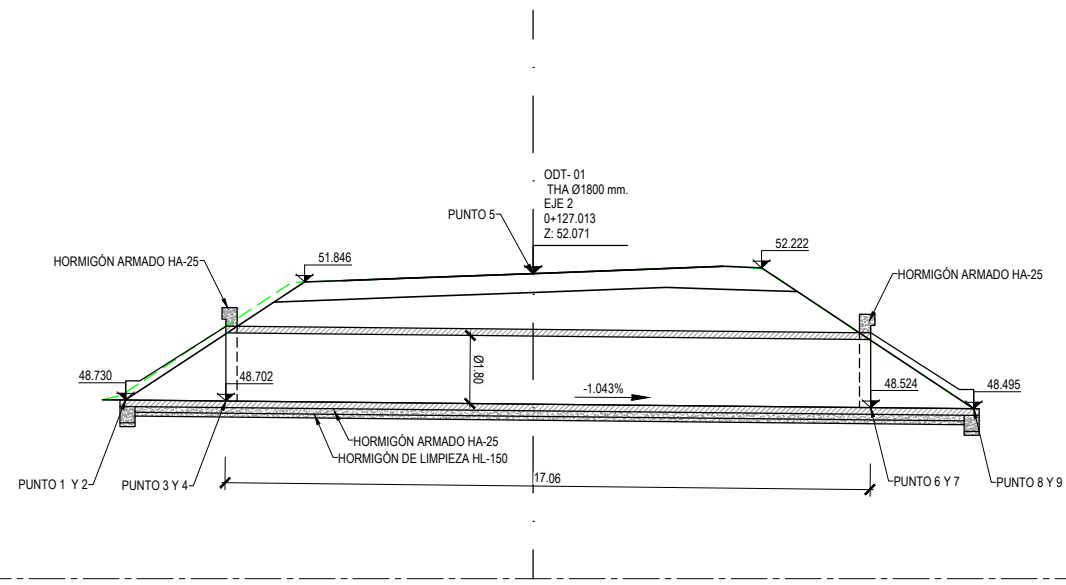


**LEYENDA**

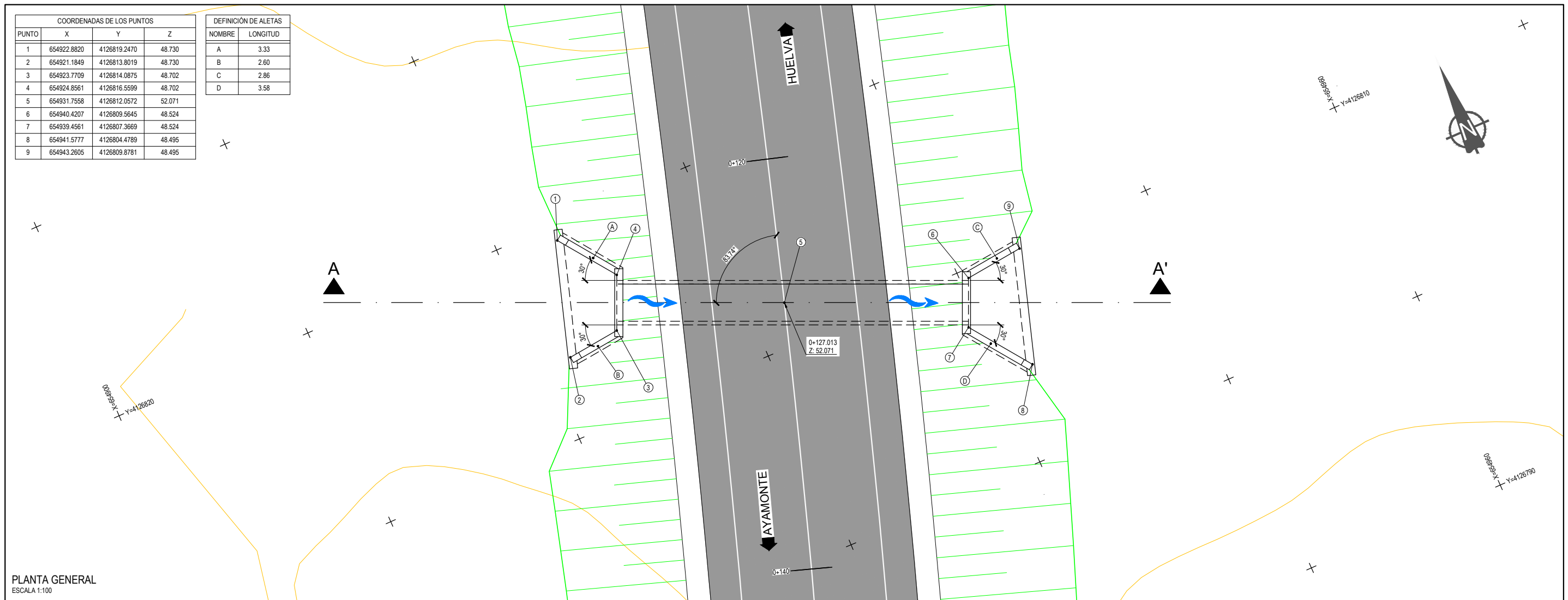
|  |                                |
|--|--------------------------------|
|  | PUNTO ALTO                     |
|  | PUNTO BAJO                     |
|  | BAJANTE PREFABRICADA TERRAPLÉN |
|  | CUNETA DE TERRAPLÉN            |
|  | CUNETA EN DESMONTE             |
|  | TUBO PASACUNETAS               |



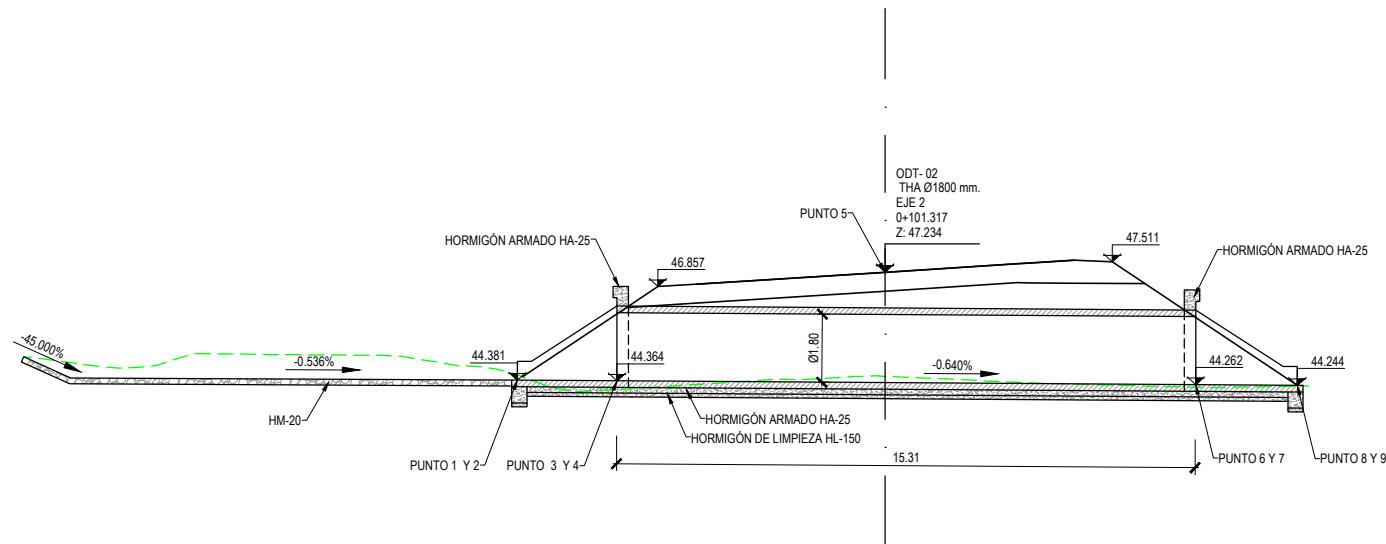
P:\2013\132396\02\_doc\_tecnica\160802\_ACCESO\_CHARE\_HUELVA\02\_Doc\_Técnica\02\_03\_Ejec\Graficos\02\_ProjTrazF3\_Enero2017\02\_Planos\05\_Drenaje\0502\_ObrasDrenajeTransv\0502H07.dwg



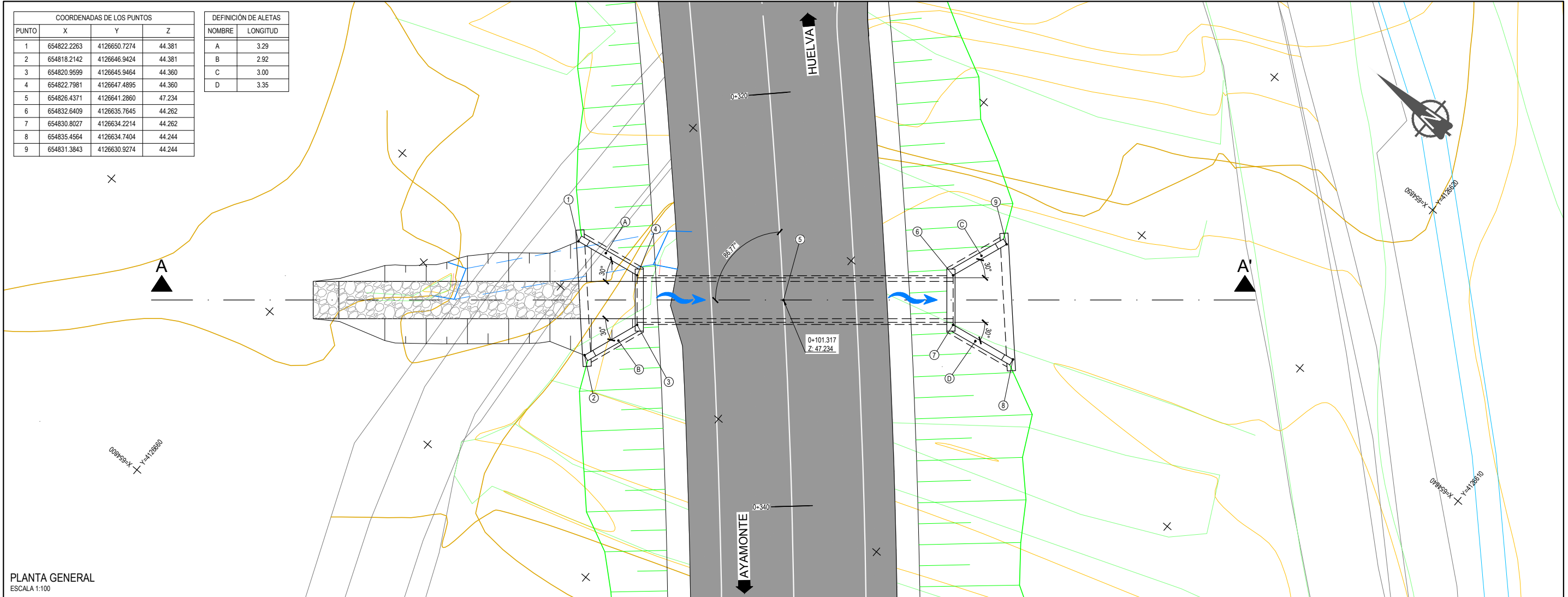
SECCIÓN TRANSVERSAL A-A'  
ESCALA 1:100



PLANTA GENERAL  
ESCALA 1:100



SECCIÓN TRANSVERSAL A-A'  
ESCALA 1:100



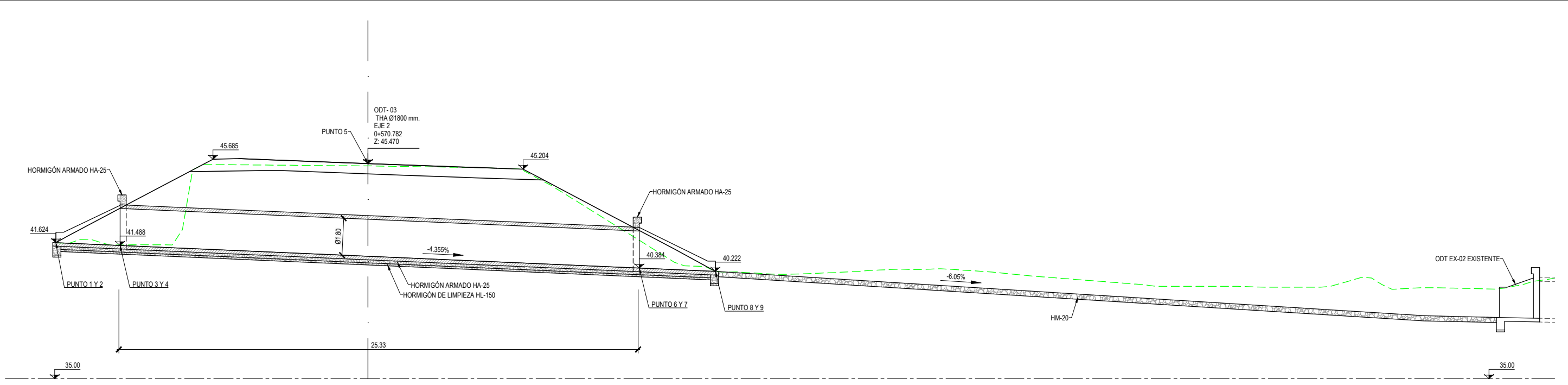
PLANTA GENERAL  
ESCALA 1:100

| COORDENADAS DE LOS PUNTOS |             |              |        |
|---------------------------|-------------|--------------|--------|
| PUNTO                     | X           | Y            | Z      |
| 1                         | 654822.2263 | 4126650.7274 | 44.381 |
| 2                         | 654818.2142 | 4126646.9424 | 44.381 |
| 3                         | 654820.9599 | 4126645.9464 | 44.360 |
| 4                         | 654822.7981 | 4126647.4895 | 44.360 |
| 5                         | 654826.4371 | 4126641.2860 | 47.234 |
| 6                         | 654832.6409 | 4126635.7645 | 44.262 |
| 7                         | 654830.8027 | 4126634.2214 | 44.262 |
| 8                         | 654835.4564 | 4126634.7404 | 44.244 |
| 9                         | 654831.3843 | 4126630.9274 | 44.244 |

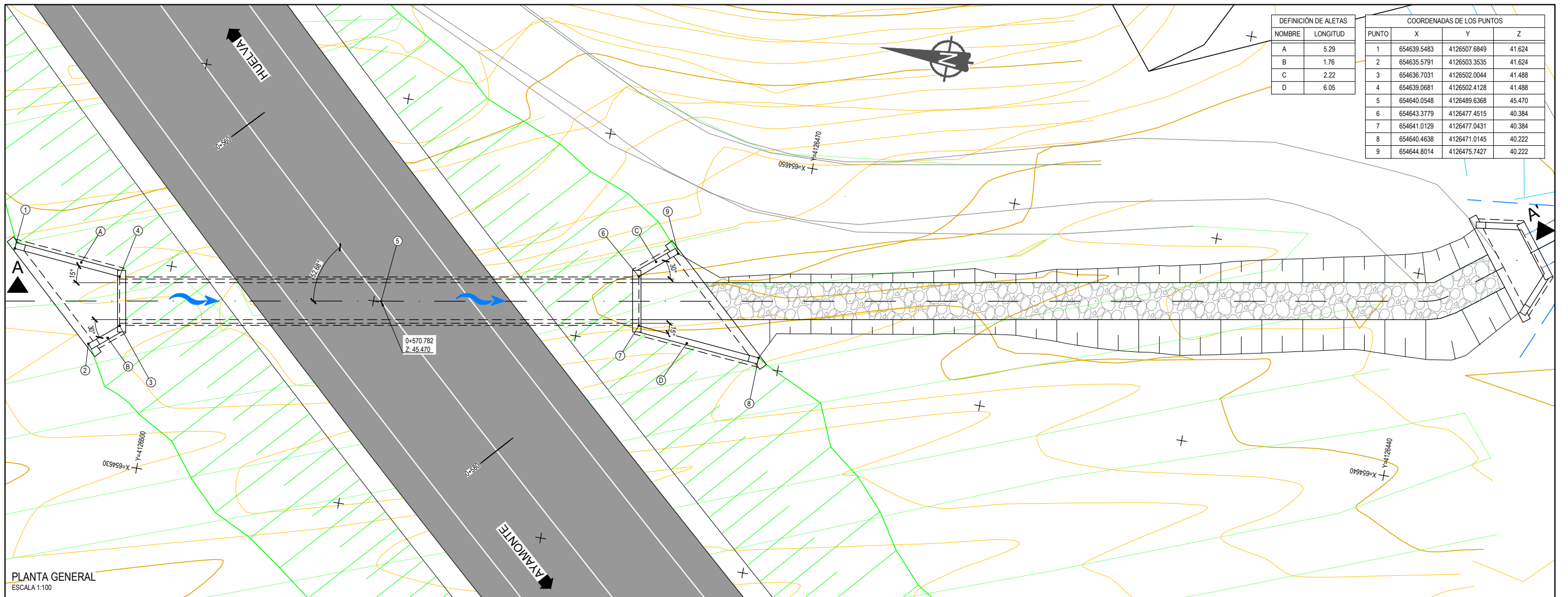
  

| DEFINICIÓN DE ALETAS |          |
|----------------------|----------|
| NOMBRE               | LONGITUD |
| A                    | 3.29     |
| B                    | 2.92     |
| C                    | 3.00     |
| D                    | 3.35     |

P:\2013\132396\02\_doc\_tecnica\160802\_ACCESO CHARE HUELVA\02 Doc Técnica\02\_03\_Ejec\Graficos\02 ProyTrazF3 Enero2017\02 Planos\05 Drenaje\0502 ObrasDrenaTransv\0502H07.dwg



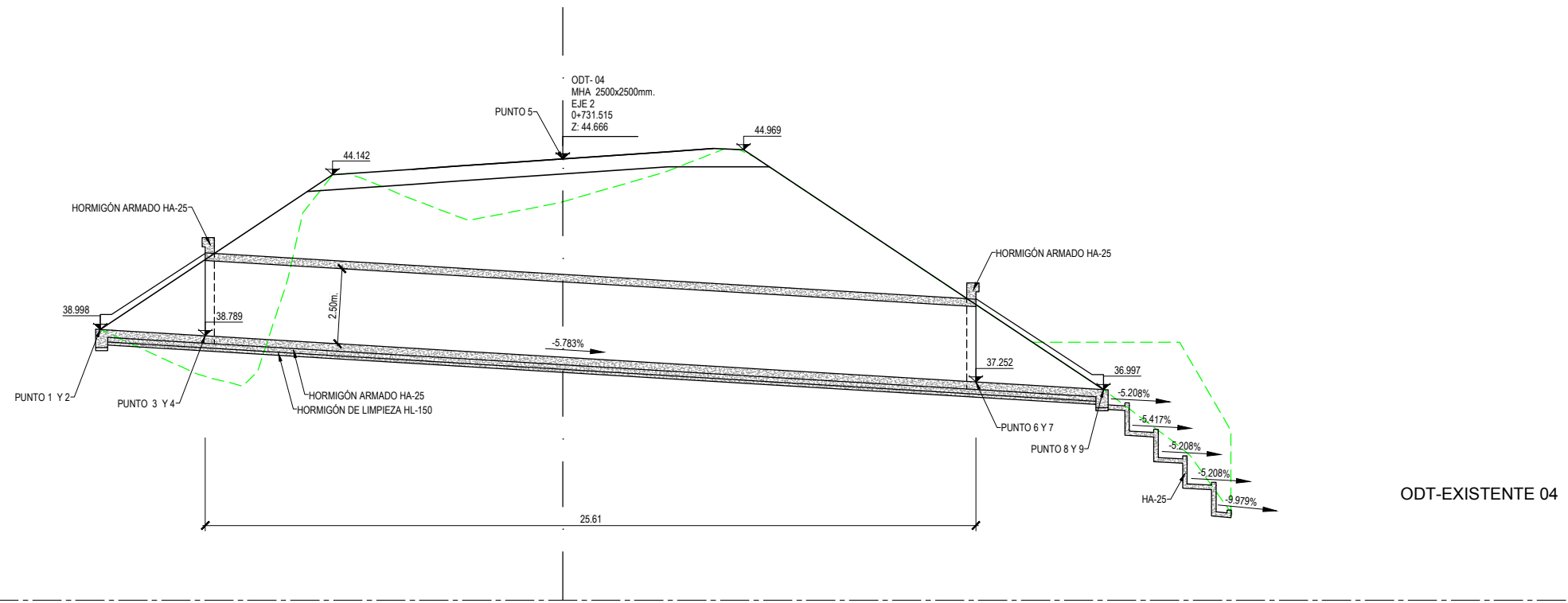
SECCIÓN TRANSVERSAL A-A'  
ESCALA 1:100



PLANTA GENERAL  
ESCALA 1:100

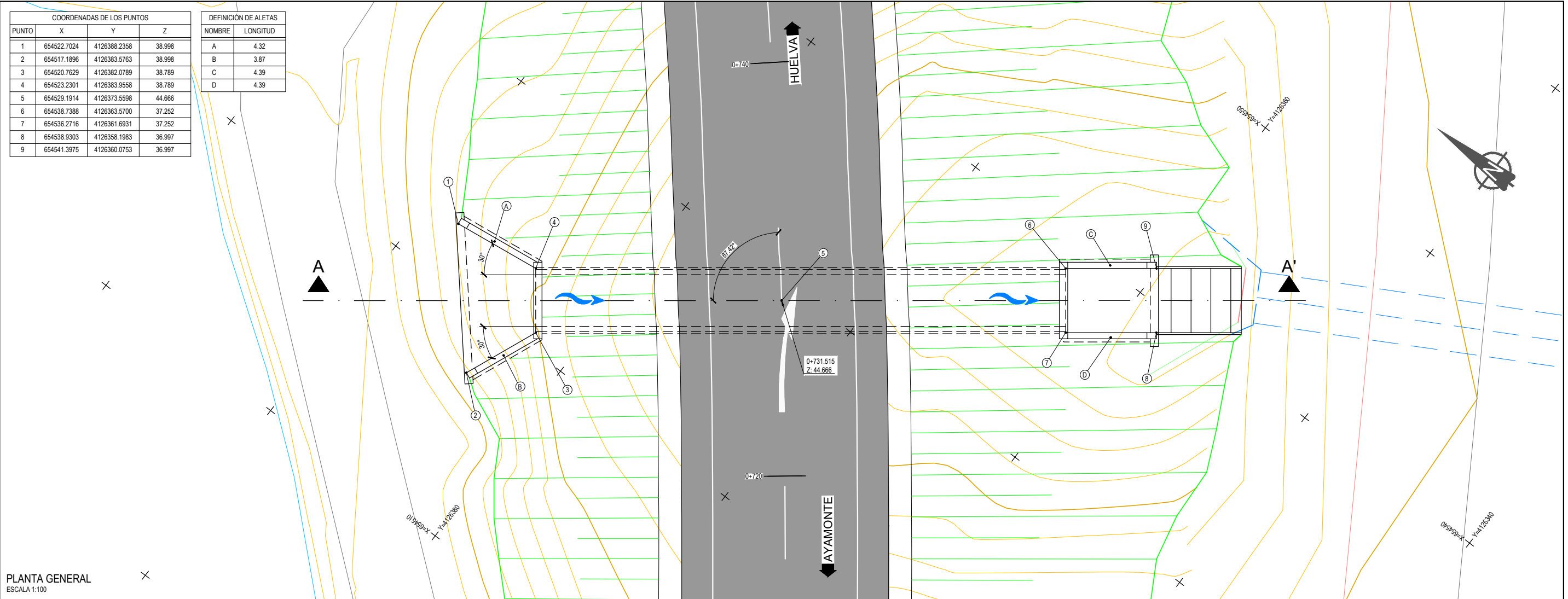
| DEFINICIÓN DE ALETAS |          |
|----------------------|----------|
| NOMBRE               | LONGITUD |
| A                    | 5.29     |
| B                    | 1.76     |
| C                    | 2.22     |
| D                    | 6.05     |

| COORDENADAS DE LOS PUNTOS |             |              |        |
|---------------------------|-------------|--------------|--------|
| PUNTO                     | X           | Y            | Z      |
| 1                         | 654639.5483 | 4126507.6849 | 41.624 |
| 2                         | 654635.5791 | 4126503.3535 | 41.624 |
| 3                         | 654636.7031 | 4126502.0044 | 41.488 |
| 4                         | 654639.0681 | 4126502.4128 | 41.488 |
| 5                         | 654640.0548 | 4126489.6368 | 45.470 |
| 6                         | 654643.3779 | 4126477.4515 | 40.384 |
| 7                         | 654641.0129 | 4126477.0431 | 40.384 |
| 8                         | 654640.4638 | 4126471.0145 | 40.222 |
| 9                         | 654644.8014 | 4126475.7427 | 40.222 |

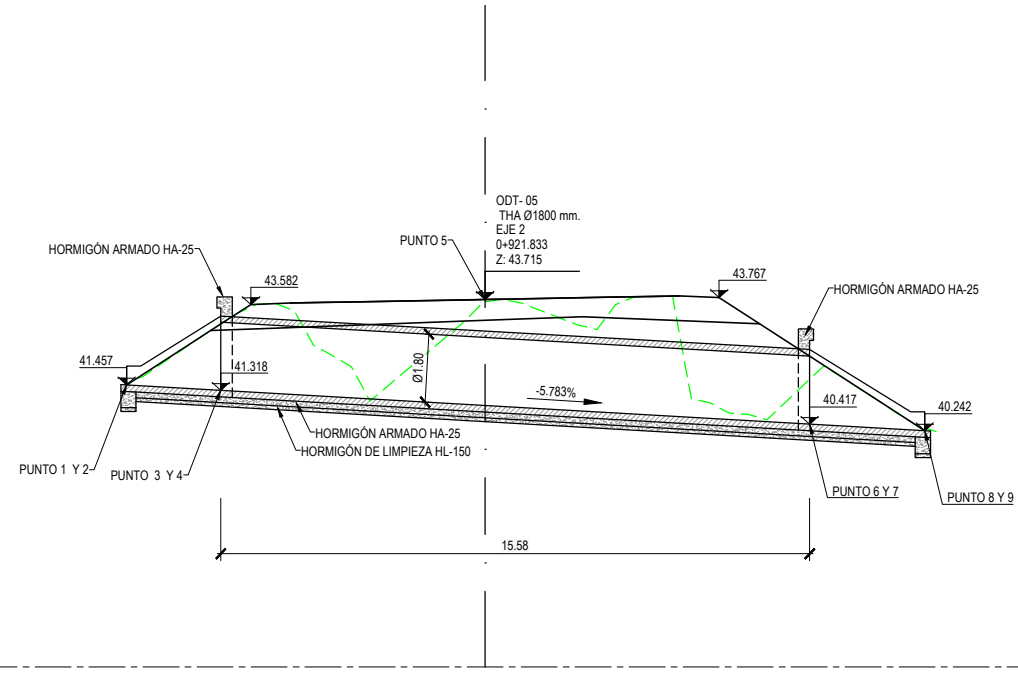


SECCIÓN TRANSVERSAL A-A'  
ESCALA 1:100

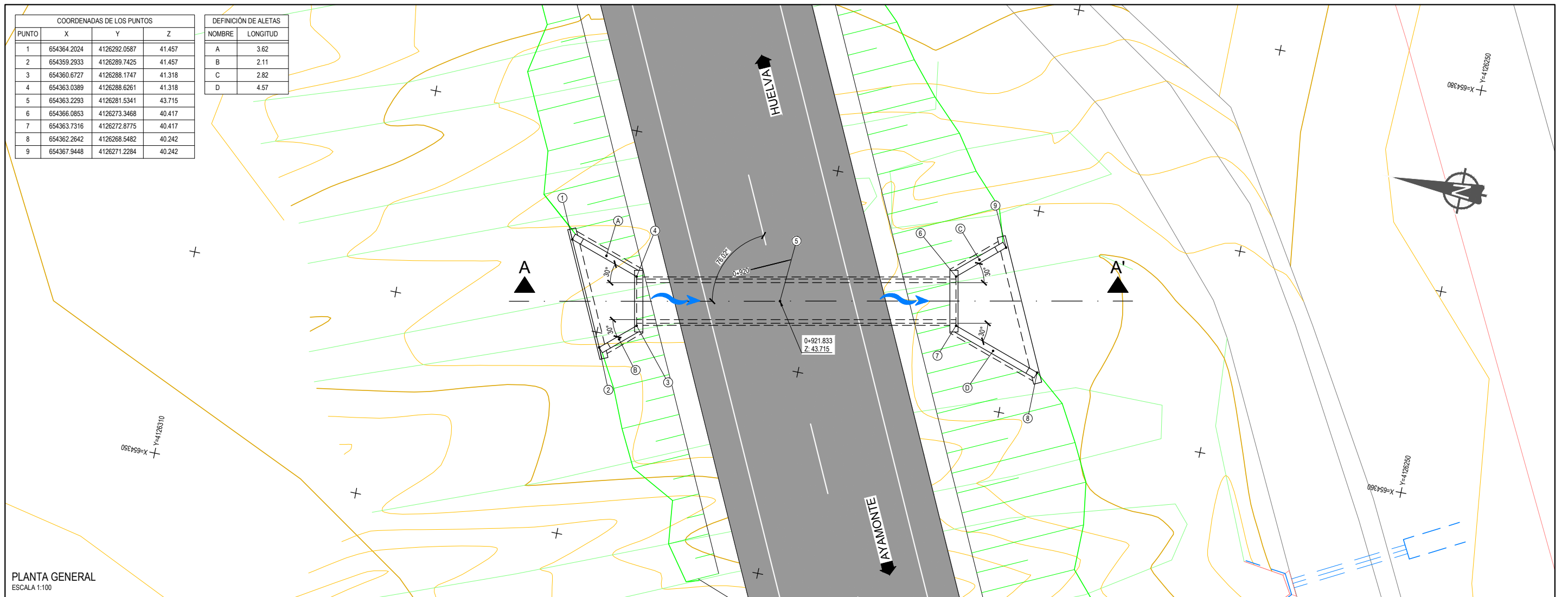
| COORDENADAS DE LOS PUNTOS |             |              | DEFINICIÓN DE ALETAS |          |
|---------------------------|-------------|--------------|----------------------|----------|
| PUNTO                     | X           | Y            | NOMBRE               | LONGITUD |
| 1                         | 654522.7024 | 4126388.2358 | A                    | 4.32     |
| 2                         | 654517.1896 | 4126383.5763 | B                    | 3.87     |
| 3                         | 654520.7629 | 4126382.0789 | C                    | 4.39     |
| 4                         | 654523.2301 | 4126383.9558 | D                    | 4.39     |
| 5                         | 654529.1914 | 4126373.5598 |                      |          |
| 6                         | 654538.7388 | 4126363.5700 |                      |          |
| 7                         | 654536.2716 | 4126361.6931 |                      |          |
| 8                         | 654538.9303 | 4126358.1983 |                      |          |
| 9                         | 654541.3975 | 4126360.0753 |                      |          |



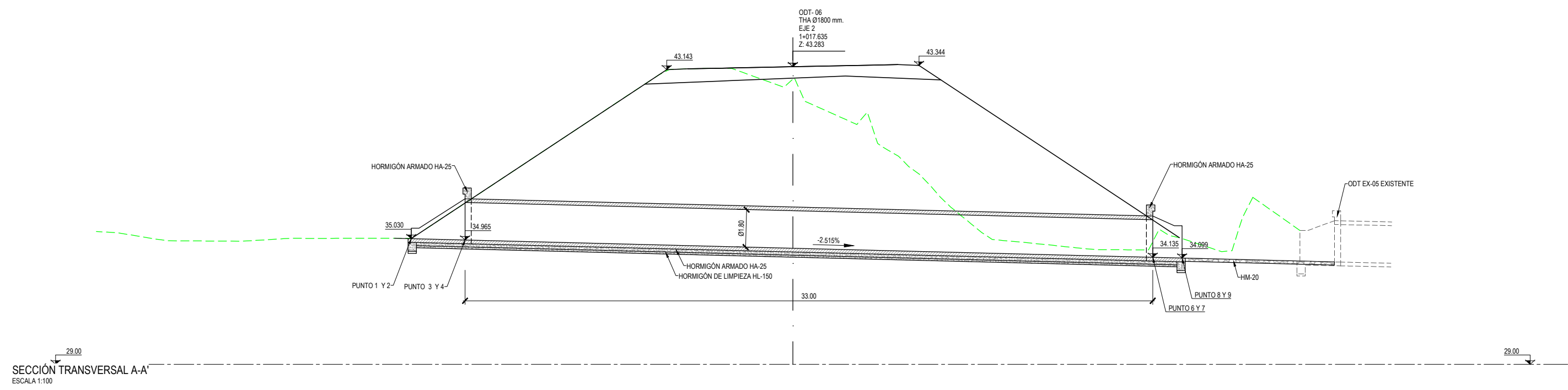
PLANTA GENERAL  
ESCALA 1:100



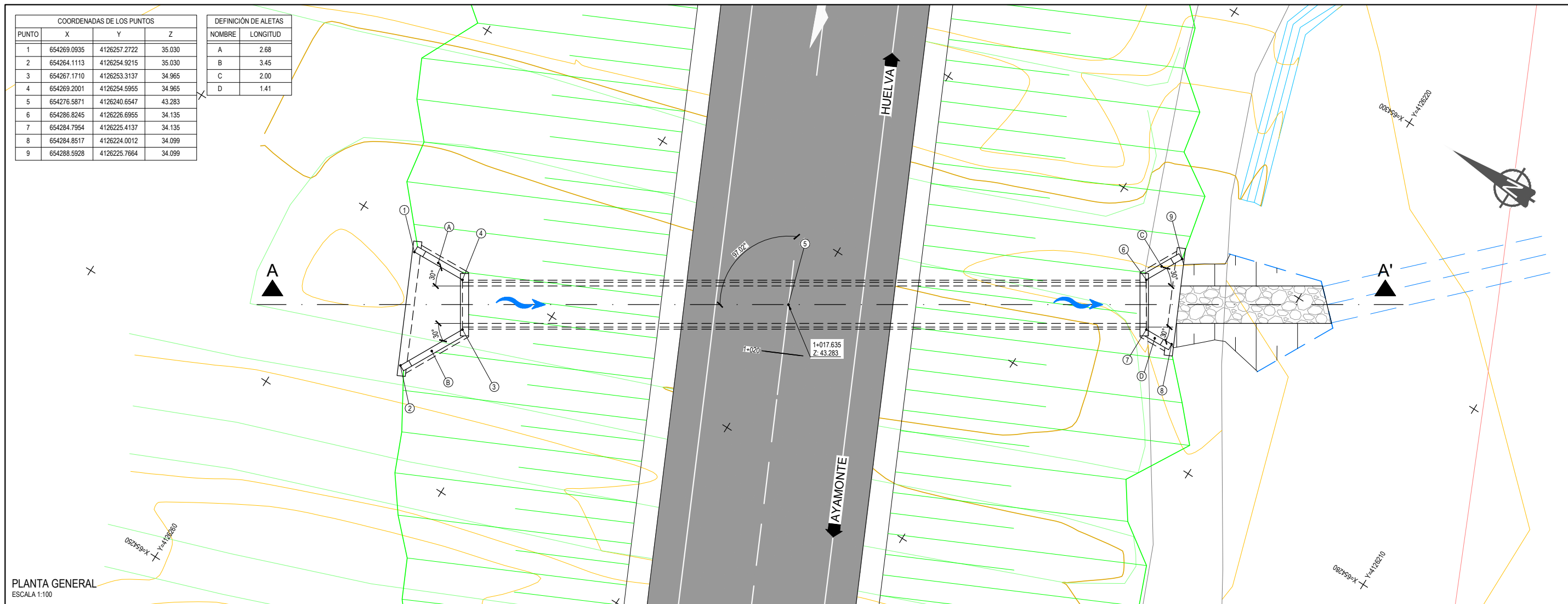
SECCIÓN TRANSVERSAL A-A'  
ESCALA 1:100



PLANTA GENERAL  
ESCALA 1:100

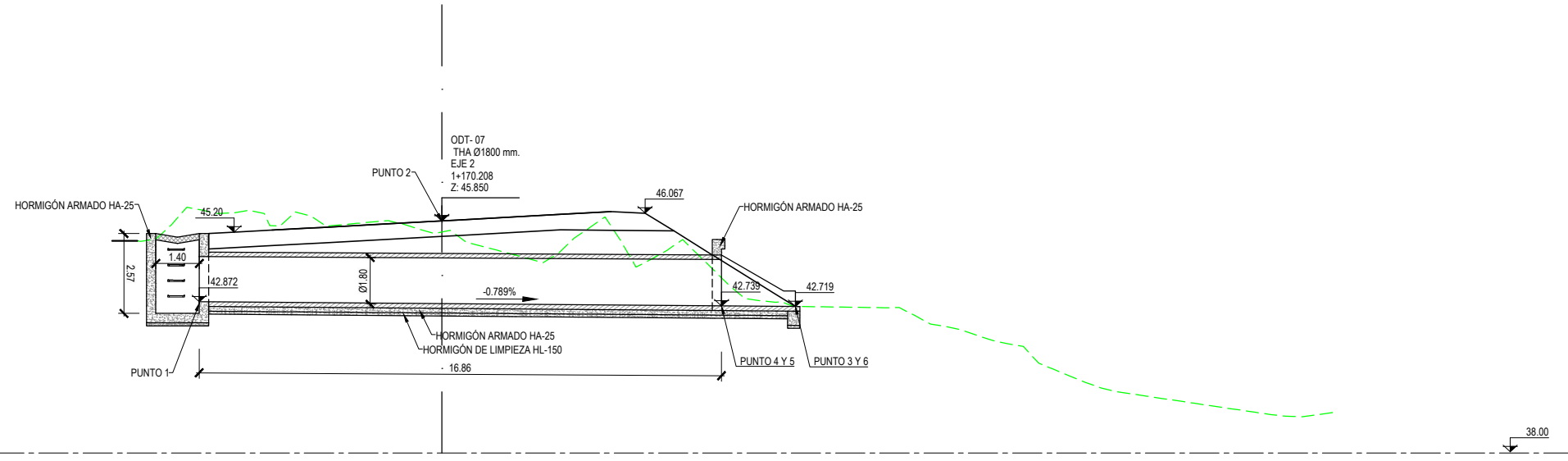


SECCIÓN TRANSVERSAL A-A'  
ESCALA 1:100

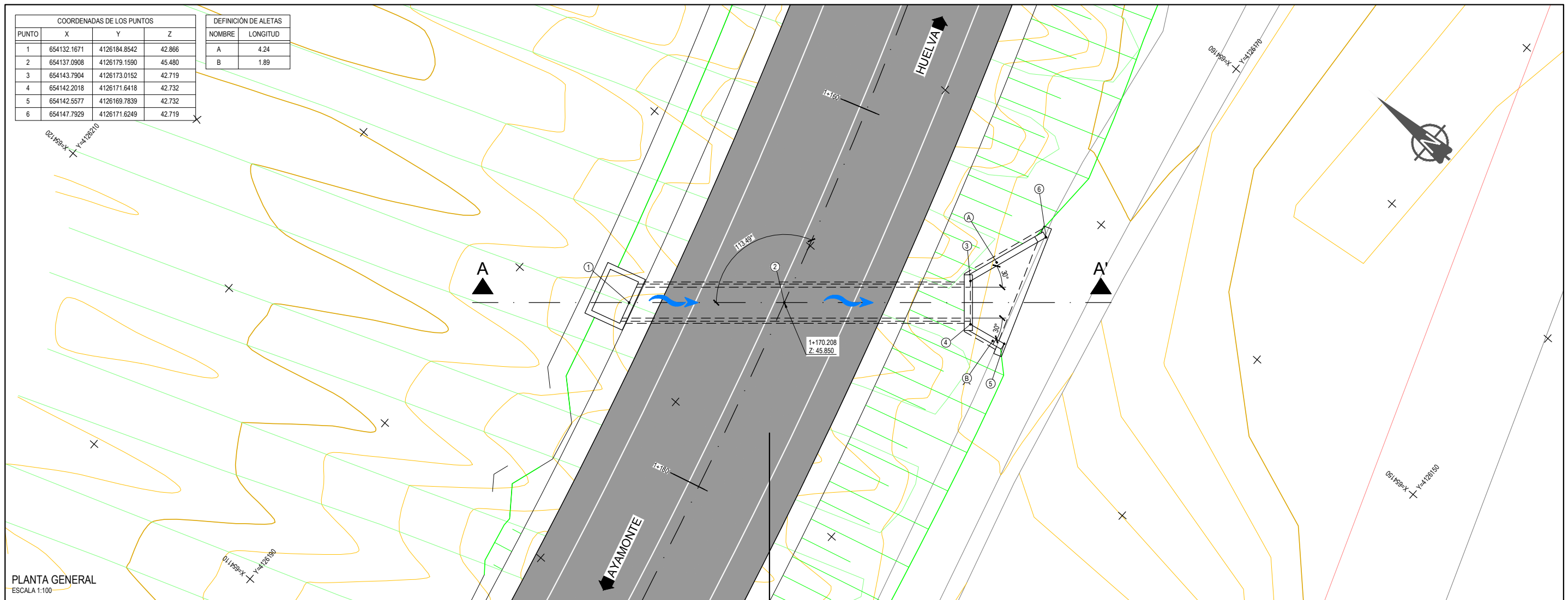


PLANTA GENERAL  
ESCALA 1:100



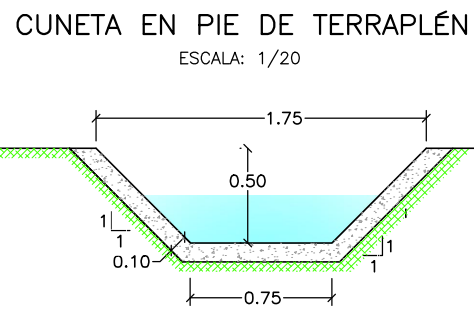
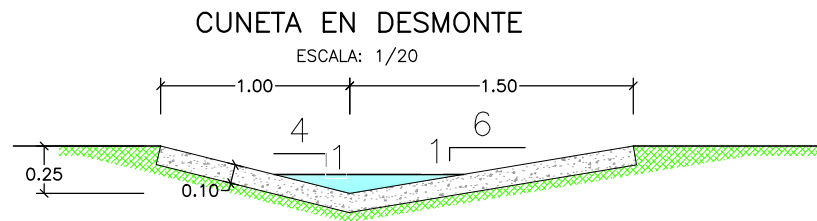


SECCIÓN TRANSVERSAL A-A'  
ESCALA 1:100

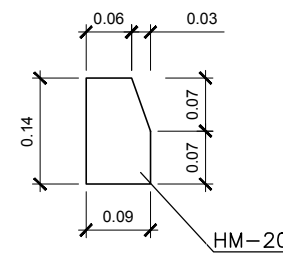
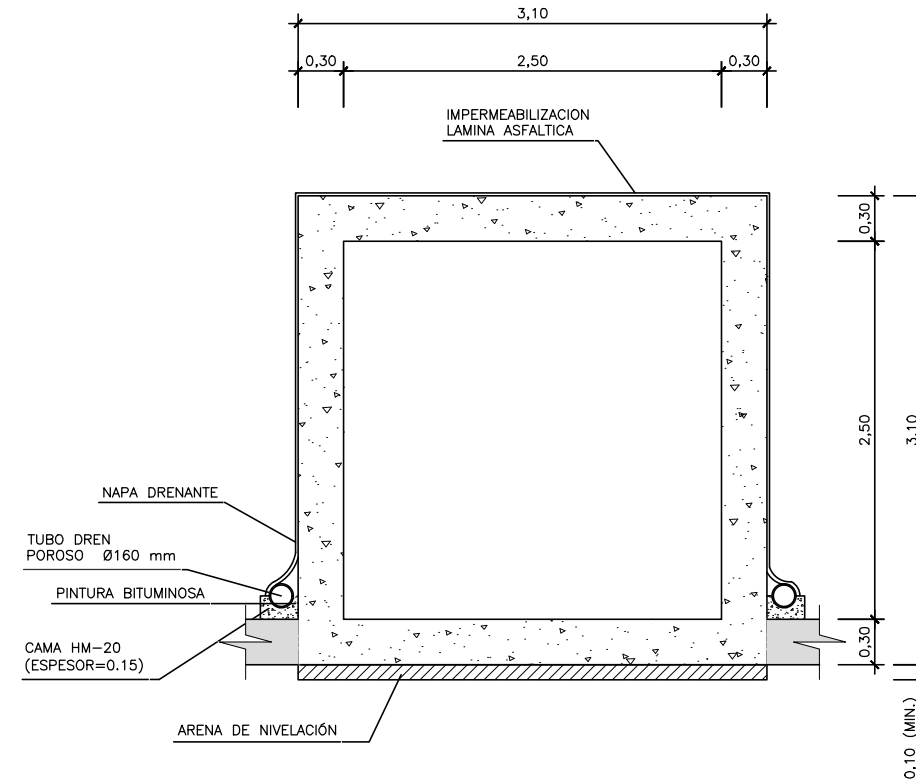


PLANTA GENERAL  
ESCALA 1:100

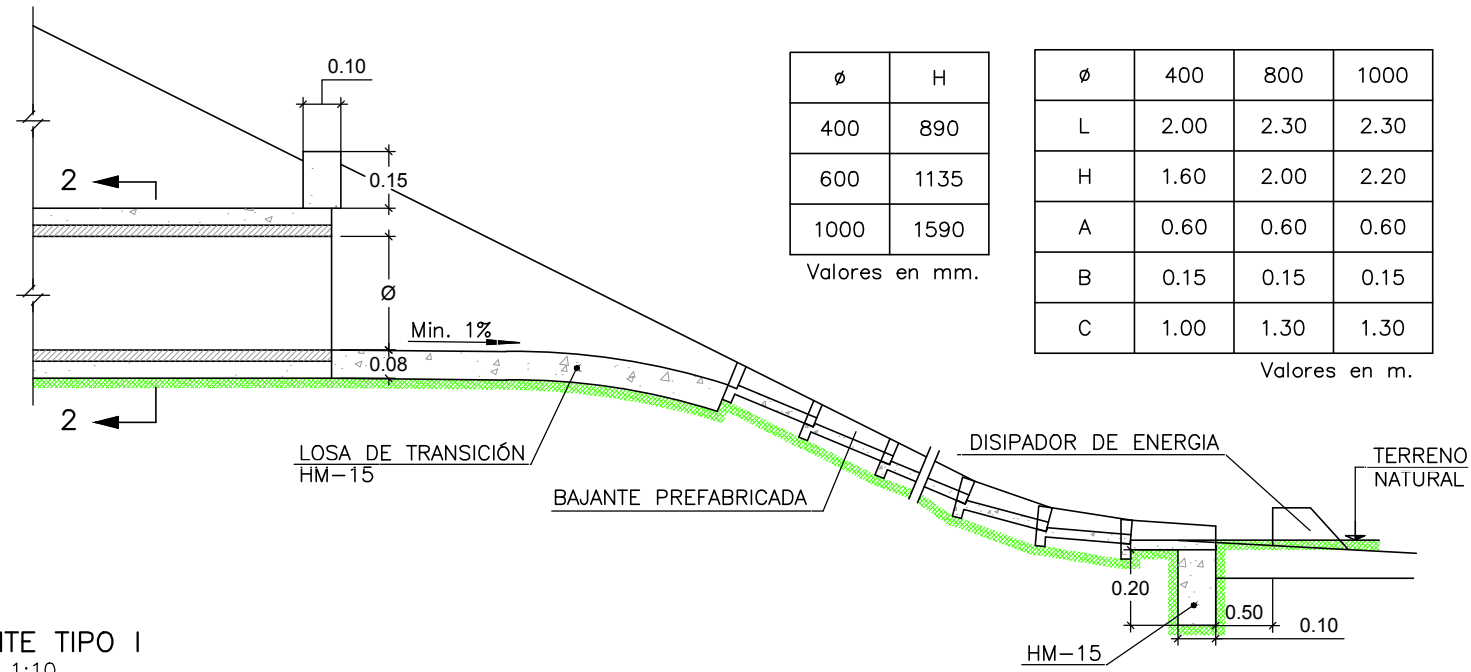
| COORDENADAS DE LOS PUNTOS |             |              | DEFINICIÓN DE ALETAS |          |
|---------------------------|-------------|--------------|----------------------|----------|
| PUNTO                     | X           | Y            | NOMBRE               | LONGITUD |
| 1                         | 654132.1671 | 4126184.8542 | A                    | 4.24     |
| 2                         | 654137.0908 | 4126179.1590 | B                    | 1.89     |
| 3                         | 654143.7904 | 4126173.0152 |                      |          |
| 4                         | 654142.2018 | 4126171.6418 |                      |          |
| 5                         | 654142.5577 | 4126169.7839 |                      |          |
| 6                         | 654147.7929 | 4126171.6249 |                      |          |



MARCO PREFABRICADO DE H.A. DE MEDIDAS INTERIORES 2.5m X 2.50m  
ESCALA 1:25



BORDILLO TIPO "III"  
ESCALA 1:5



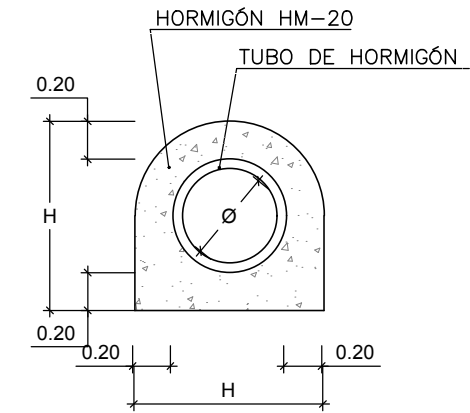
| ∅    | H    |
|------|------|
| 400  | 890  |
| 600  | 1135 |
| 1000 | 1590 |

Valores en mm.

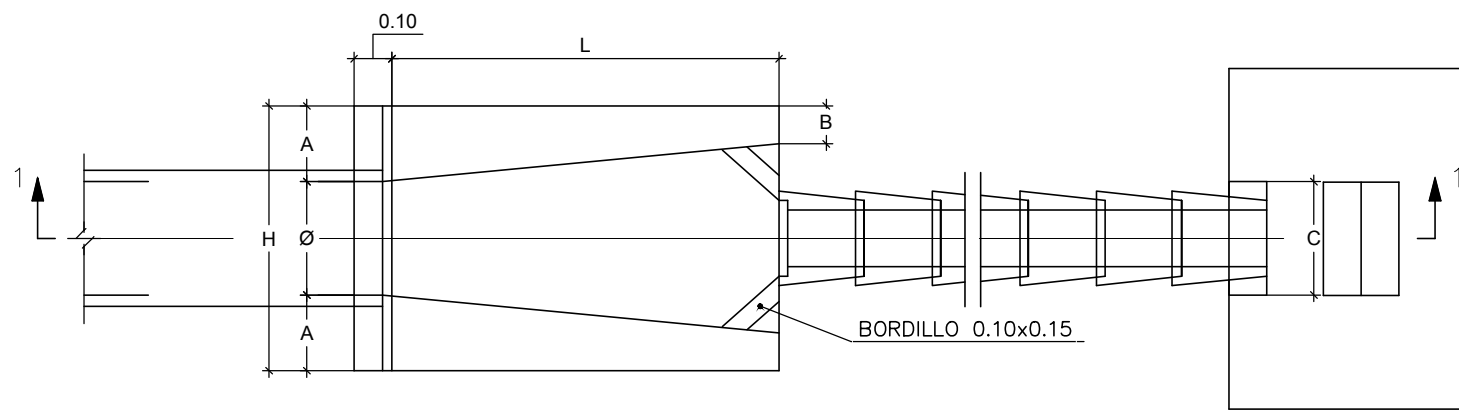
| ∅ | 400  | 800  | 1000 |
|---|------|------|------|
| L | 2.00 | 2.30 | 2.30 |
| H | 1.60 | 2.00 | 2.20 |
| A | 0.60 | 0.60 | 0.60 |
| B | 0.15 | 0.15 | 0.15 |
| C | 1.00 | 1.30 | 1.30 |

Valores en m.

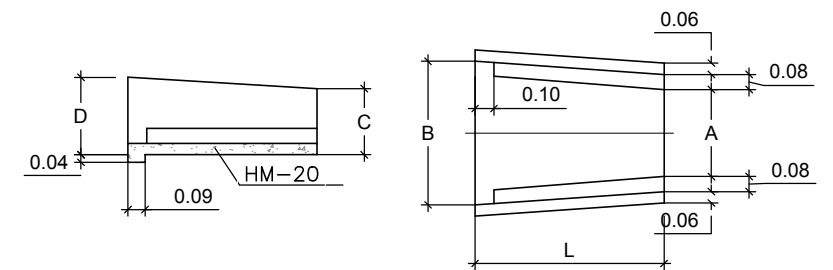
BAJANTE TIPO I  
ESCALA 1:10



SECCIÓN 2-2  
ESCALA 1:10



PLANTA  
ESCALA 1:10

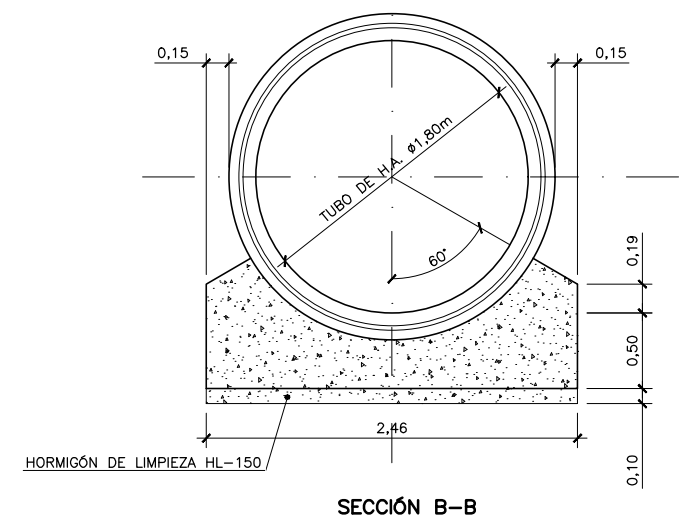
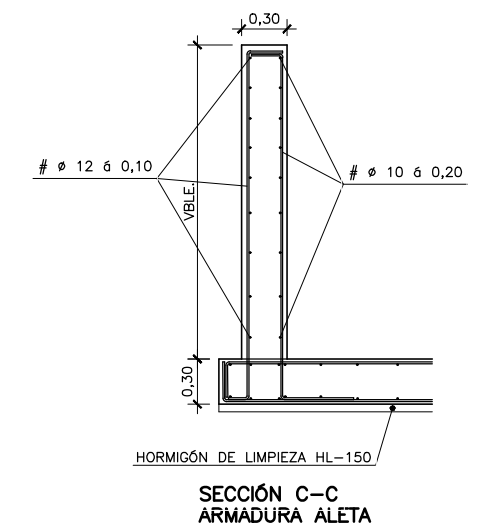
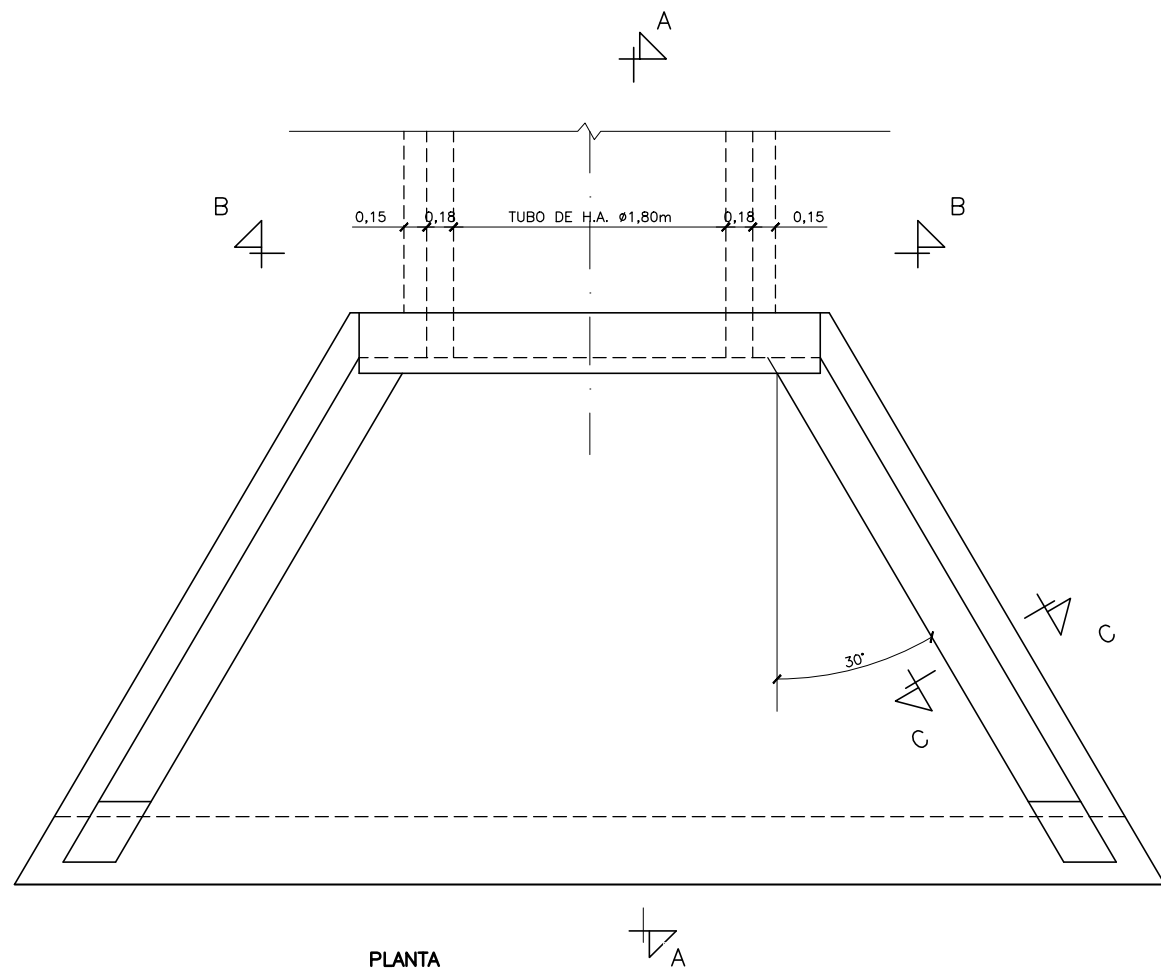
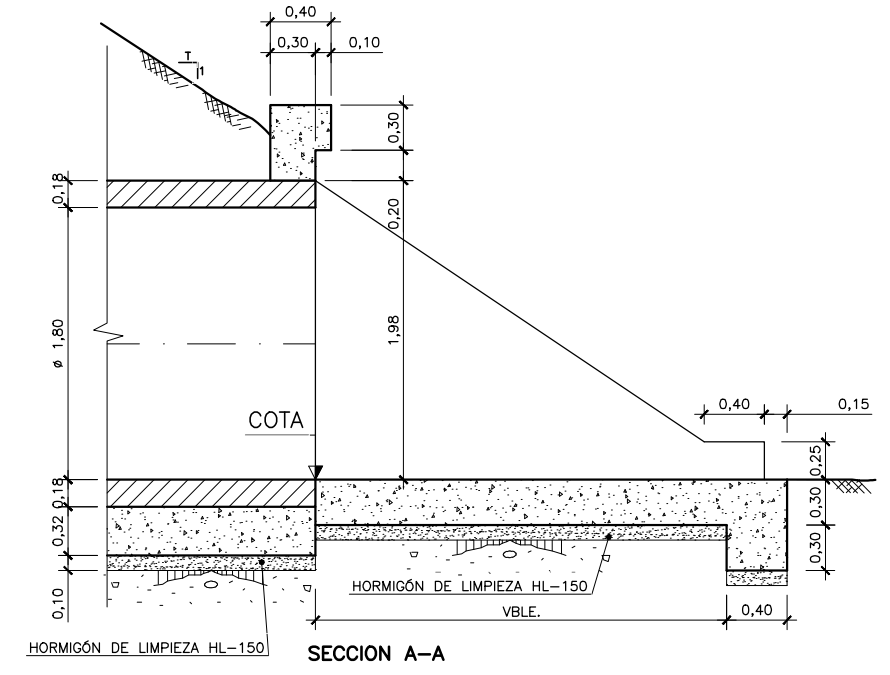
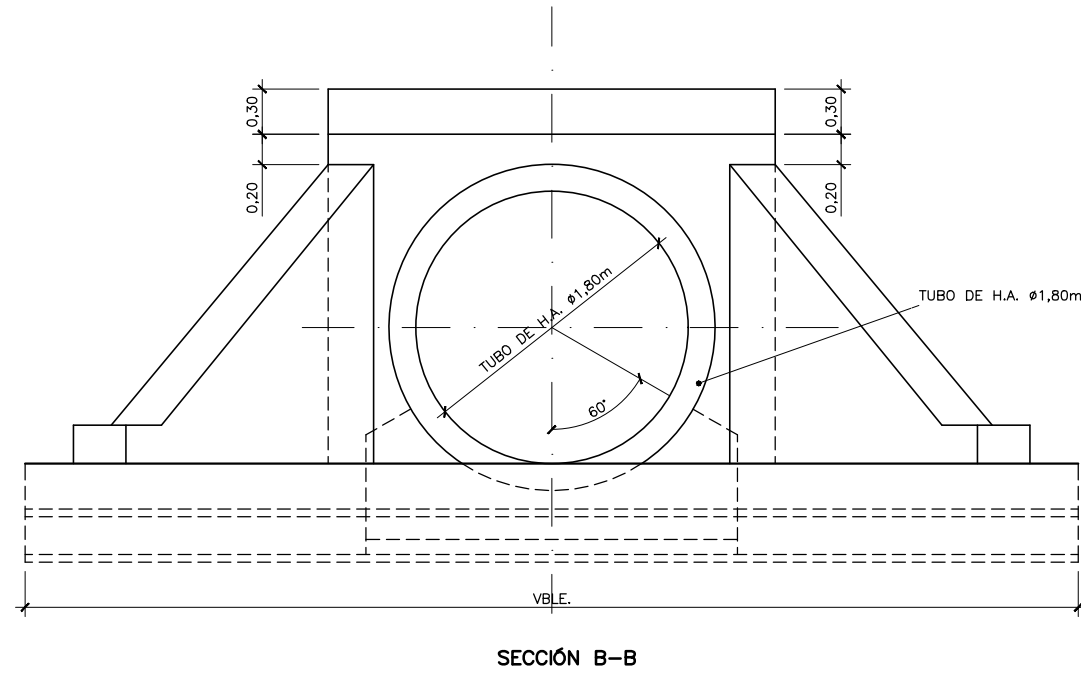


| DENOMINACIÓN | A    | B    | C    | L    | D    |
|--------------|------|------|------|------|------|
| B-3          | 0.62 | 0.74 | 0.34 | 1.00 | 0.38 |

BAJANTE TIPO III  
ESCALA 1:50

DETALLE DE SALIDA DE DRENAJE LONGITUDINAL CON BAJANTE

DETALLE DE BOQUILLA CON ALETAS PARA TUBO DE H.A.  $\phi$  1,80m



DETALLE DE BOQUILLA CON ALETAS PARA TUBO DE H.A.  $\phi$  1,20m

