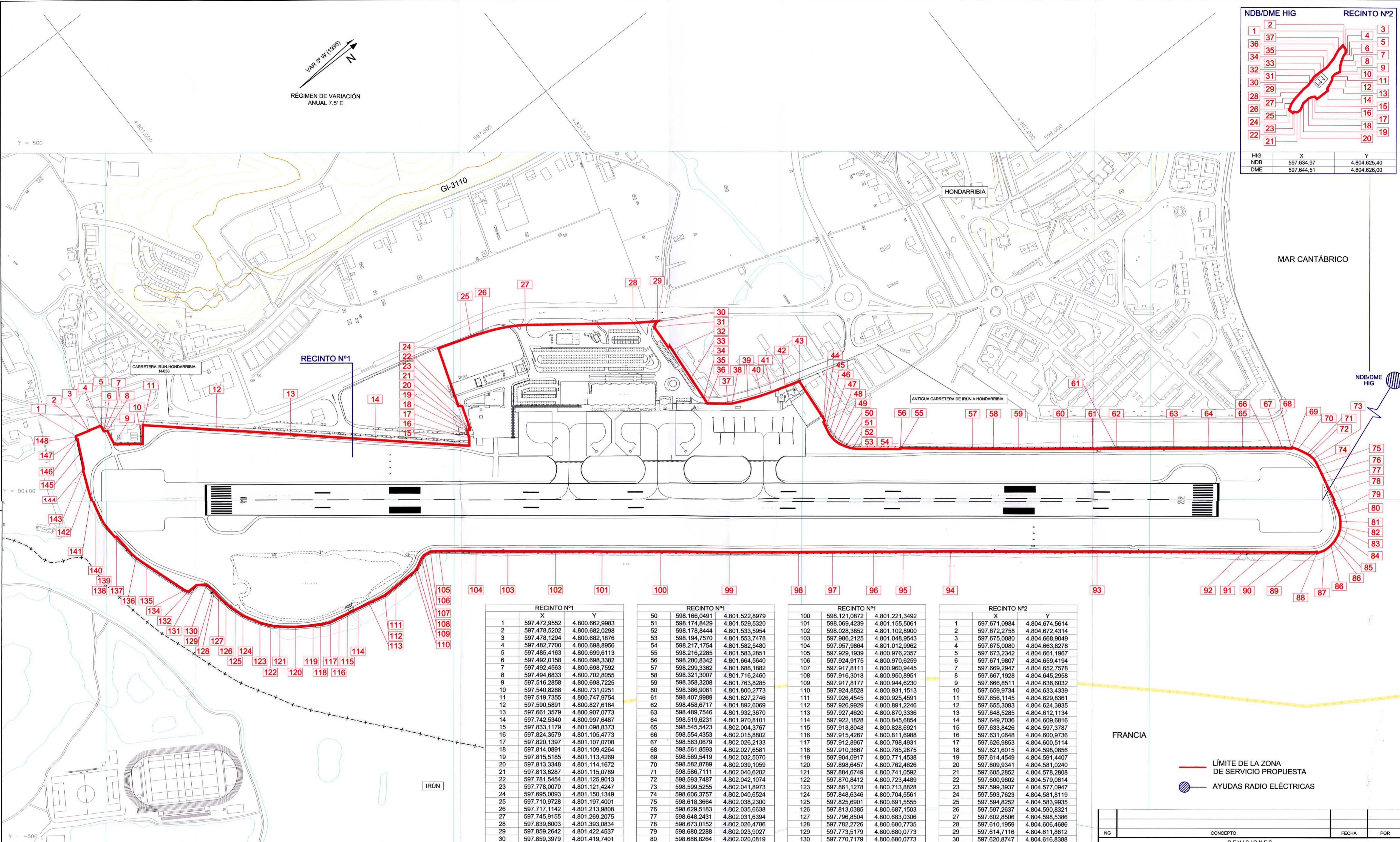
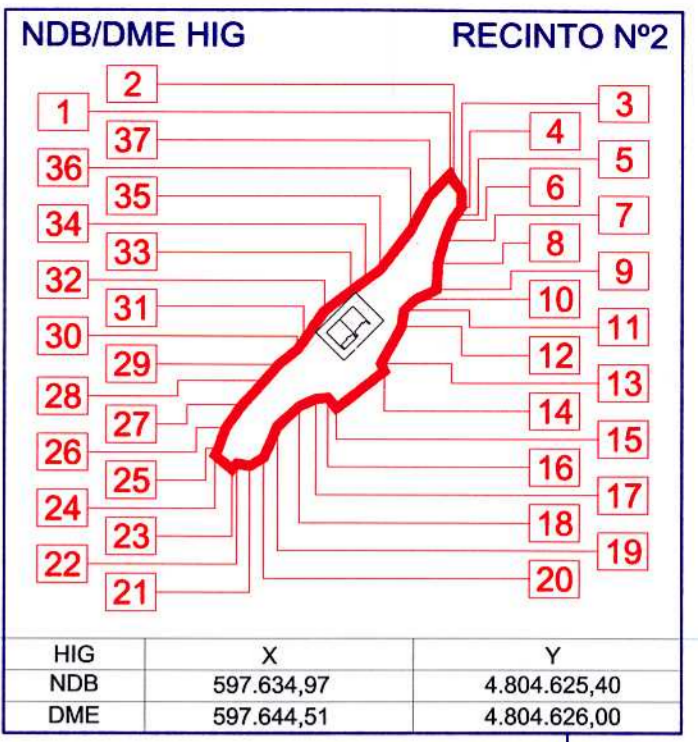


VAR 2° W (1985)  
 RÉGIMEN DE VARIACIÓN ANUAL 7.5' E



RECINTO Nº1			RECINTO Nº1			RECINTO Nº1			RECINTO Nº2		
	X	Y		X	Y		X	Y		X	Y
1	597.472,9552	4.800.662,9983	50	598.166,0491	4.801.522,8979	100	598.121,0872	4.801.221,3492	1	597.671,0984	4.804.674,5614
2	597.478,5202	4.800.682,0298	51	598.174,8429	4.801.529,5320	101	598.069,4239	4.801.155,5061	2	597.672,2758	4.804.672,4314
3	597.478,1294	4.800.682,1876	52	598.178,8444	4.801.533,5954	102	598.028,3852	4.801.102,8900	3	597.675,0080	4.804.668,9049
4	597.482,7700	4.800.698,8956	53	598.194,7570	4.801.553,7478	103	597.986,2125	4.801.048,9543	4	597.675,0080	4.804.663,8278
5	597.485,4163	4.800.699,6113	54	598.217,1754	4.801.582,5480	104	597.957,9864	4.801.012,9962	5	597.673,2342	4.804.661,1967
6	597.492,0158	4.800.698,3382	55	598.216,2285	4.801.583,2851	105	597.929,1939	4.800.976,2357	6	597.671,9807	4.804.659,4194
7	597.492,4563	4.800.698,7592	56	598.280,8342	4.801.664,5640	106	597.924,9175	4.800.970,6259	7	597.669,2947	4.804.652,7578
8	597.494,6833	4.800.702,8055	57	598.299,3362	4.801.688,1882	107	597.917,8111	4.800.960,9445	8	597.667,1928	4.804.645,2958
9	597.516,2858	4.800.698,7225	58	598.321,3007	4.801.716,2460	108	597.916,3018	4.800.950,8951	9	597.666,8511	4.804.636,6032
10	597.540,8288	4.800.731,0251	59	598.358,3208	4.801.763,8285	109	597.917,8177	4.800.944,6230	10	597.659,9734	4.804.633,4339
11	597.519,7355	4.800.747,9754	60	598.386,9081	4.801.800,2773	110	597.924,8528	4.800.931,1513	11	597.656,1145	4.804.629,8361
12	597.590,5891	4.800.827,6184	61	598.407,9989	4.801.827,2746	111	597.926,4545	4.800.925,4591	12	597.655,3093	4.804.624,3935
13	597.661,3579	4.800.907,0773	62	598.458,8717	4.801.892,6069	112	597.926,9929	4.800.891,2246	13	597.648,5285	4.804.612,1134
14	597.742,5340	4.800.997,6487	63	598.489,7546	4.801.932,3670	113	597.927,4620	4.800.870,3336	14	597.649,7036	4.804.609,6816
15	597.833,1179	4.801.098,8373	64	598.519,6231	4.801.970,8101	114	597.922,1828	4.800.845,6884	15	597.633,8426	4.804.597,3787
16	597.824,3579	4.801.105,4773	65	598.545,5423	4.802.004,3767	115	597.918,8048	4.800.828,6921	16	597.631,0648	4.804.600,9736
17	597.820,1397	4.801.107,0708	66	598.554,4353	4.802.015,8802	116	597.915,4267	4.800.811,6988	17	597.628,9853	4.804.600,5114
18	597.814,0891	4.801.109,4264	67	598.563,0679	4.802.026,2133	117	597.912,8967	4.800.798,4931	18	597.621,6015	4.804.598,0856
19	597.815,5185	4.801.113,4269	68	598.561,8593	4.802.027,6581	118	597.910,3667	4.800.785,2875	19	597.614,4549	4.804.591,4407
20	597.813,3348	4.801.114,1672	69	598.569,5419	4.802.032,5070	119	597.904,0917	4.800.771,4538	20	597.609,9341	4.804.581,0240
21	597.813,6287	4.801.115,0789	70	598.582,8789	4.802.032,1059	120	597.898,6457	4.800.762,4626	21	597.605,2852	4.804.578,2808
22	597.781,5454	4.801.125,9013	71	598.586,7111	4.802.040,6202	121	597.884,6749	4.800.741,0592	22	597.600,9602	4.804.579,0614
23	597.778,0070	4.801.121,4247	72	598.593,7487	4.802.042,1074	122	597.870,8412	4.800.723,4489	23	597.599,3937	4.804.577,0947
24	597.695,0093	4.801.150,1349	73	598.599,5255	4.802.041,8973	123	597.861,1278	4.800.713,8828	24	597.593,7623	4.804.581,8119
25	597.710,9728	4.801.197,4001	74	598.606,3757	4.802.040,6524	124	597.848,6346	4.800.704,5561	25	597.594,8252	4.804.583,9935
26	597.717,1142	4.801.213,9808	75	598.618,3664	4.802.038,2300	125	597.825,6901	4.800.691,5555	26	597.597,2637	4.804.590,8321
27	597.745,9155	4.801.269,2075	76	598.629,5183	4.802.036,6638	126	597.813,0385	4.800.687,1503	27	597.602,8506	4.804.598,5386
28	597.839,6003	4.801.393,0834	77	598.648,2431	4.802.031,6394	127	597.796,8504	4.800.683,0306	28	597.610,1959	4.804.606,4686
29	597.859,2642	4.801.422,4537	78	598.673,0152	4.802.026,4786	128	597.782,2726	4.800.680,7735	29	597.614,7116	4.804.611,8612
30	597.859,3979	4.801.419,7401	79	598.680,2288	4.802.023,9027	129	597.773,5179	4.800.680,0773	30	597.620,8747	4.804.616,8388
31	597.862,9508	4.801.413,4216	80	598.686,8264	4.802.020,0819	130	597.770,7179	4.800.680,0773	31	597.623,0538	4.804.619,7296
32	597.903,6180	4.801.410,7855	81	598.693,4816	4.802.014,8055	131	597.758,2379	4.800.677,7573	32	597.629,8496	4.804.629,5938
33	597.952,2438	4.801.407,0932	82	598.695,8689	4.802.012,4786	132	597.749,7179	4.800.665,5173	33	597.636,5192	4.804.636,0176
34	597.985,8889	4.801.404,4821	83	598.704,4752	4.802.005,7872	133	597.750,1579	4.800.650,7173	34	597.643,3078	4.804.639,6318
35	597.995,3044	4.801.403,4752	84	598.704,4321	4.801.996,0419	134	597.745,3512	4.800.647,6383	35	597.648,1596	4.804.643,1350
36	598.013,2909	4.801.426,6014	85	598.705,3582	4.801.992,1168	135	597.682,3137	4.800.626,1516	36	597.658,1238	4.804.656,0323
37	598.016,9616	4.801.431,8250	86	598.706,0026	4.801.988,0696	136	597.665,4047	4.800.621,2670	37	597.664,3270	4.804.667,4075
38	598.026,5520	4.801.453,4937	87	598.706,1828	4.801.975,8522	137	597.623,7381	4.800.617,8575	1	597.671,0984	4.804.674,5614
39	598.033,8850	4.801.472,0587	88	598.702,7204	4.801.965,1174	138	597.622,8421	4.800.615,5245			
40	598.039,0118	4.801.486,6331	89	598.700,6687	4.801.966,1247	139	597.622,8421	4.800.615,5245			
41	598.045,0943	4.801.506,9063	90	598.679,0985	4.801.937,3779	140	597.572,7037	4.800.620,0779			
42	598.050,9903	4.801.527,9572	91	598.656,7857	4.801.909,0458	141	597.555,2905	4.800.624,8084			
43	598.117,9457	4.801.522,2020	92	598.636,8539	4.801.883,8979	142	597.538,9256	4.800.631,5421			
44	598.118,7166	4.801.519,1980	93	598.506,8455	4.801.717,6521	143	597.516,8920	4.800.641,3414			
45	598.127,3645	4.801.517,1980	94	598.377,0371	4.801.551,4064	144	597.517,3308	4.800.642,0985			
46	598.137,0720	4.801.515,4472	95	598.335,8681	4.801.497,3673	145	597.496,2974	4.800.652,7951			
47	598.145,2894	4.801.515,4278	96	598.309,9208	4.801.463,9119	146	597.477,7745	4.800.661,8475			
48	598.154,0182	4.801.517,0992	97	598.273,6315	4.801.416,9077	147	597.477,0261	4.800.660,2656			
49	598.159,0310	4.801.519,0506	98	598.243,7330	4.801.378,5065	148	597.473,6247	4.800.661,8747			
			99	598.182,2740	4.801.299,5965	1	597.472,9552	4.800.662,9983			

— LÍMITE DE LA ZONA DE SERVICIO PROPUESTA  
 ● AYUDAS RADIO ELÉCTRICAS

NG	CONCEPTO	FECHA	POR
REVISIONES			
DIRECCIÓN DE PLANIFICACIÓN DE INFRAESTRUCTURAS			
AEROPUERTO DE SAN SEBASTIÁN			
PLAN DIRECTOR			
ZONA DE SERVICIO PROPUESTA COORDENADAS UTM			
HOJA Nº	PLANO Nº	FECHA	EDICIÓN
	4.4	MAYO 2006	1.2.500

CARTOGRAFÍA  
 Coordenadas: UTM ED50  
 Fuente: 1:5.000 web  
 Servicio de Información Territorial  
 Diputación Foral de Guipúzcoa